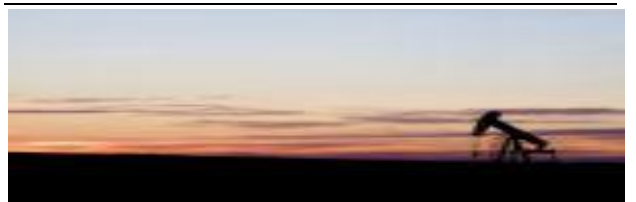




Gas & Coal Reserve And Production

July 2018



Gas Reserve & Production at a glance in July 2018:

Gas Initially in Place (GIIP)	:	35,796.19 Bcf
Recoverable (2P)	:	28,685.40 Bcf
Cumulative Production as of July 2018	:	16048.19 Bcf
Remaining Reserve upto July 2018	:	12,637.21 Bcf
Gas Production in July 2018	:	84.80 Bcf
National Oil Company (NOC's) production in July 2018	:	33.77 Bcf
International Oil Company (IOC's) production in July 2018	:	51.03 Bcf
No. of National Oil Company (NOC's) in July 2018	:	3 (BGFCL, BAPEX, SGFL)
No. of International Oil Company (IOC's) in July 2018	:	2 (Chevron, Tullow)
Total gas fields of National Oil Company(NOC) in July 2018	:	21
Total gas fields of International Oil Company(IOC) in July 2018	:	5
Total gas wells of National Oil Company(NOC) in July 2018	:	116
Total gas wells of International Oil Company(IOC) in July 2018	:	60
No. of National Oil Company (NOC's) gas production well in July 2018	:	66
No. of International Oil Company (IOC's) gas production well in July 2018	:	44
No. of National Oil company(NOC's) suspended well in July 2018	:	50
No. of International Oil company(IOC's) suspended well in July 2018	:	16

Executive Summary of July 2018

Total gas and condensate Production in July 2018 were 84.80 Bcf and 357,601.85 Bbl. In the previous month i.e. June 2018, gas and condensate production was 75.55 Bcf and 319,588 Bbl and in the same month of the previous year i.e. July 2017, total gas and condensate production was 84.01 Bcf and 354,800 Bbl respectively. It indicates that 9.25 Bcf more gas was produced than June 2018 and 0.79 Bcf more gas was produced than July 2017.

The National Oil Companies (NOC's) and International Oil Companies (IOC's) Produced 33.77 Bcf and 51.03 Bcf gas respectively in July 2018. During the previous month i.e. June 2018 gas production by the National Oil Companies (NOC's) and International Oil Companies (IOC's) were 32.14 Bcf and 43.41 Bcf respectively. In the month of July 2018 Bibiyana gas field Produced 40.74 Bcf gas and it ranked top among the gas producers. It is noted that Bibiyana gas field Produced 32.95 Bcf in June 2018. Average production from the field during the month of July 2018 was 1314 Mmcf/d.

During the month of July 2018 total production of condensate was 357,601.85 Bbl compared to 319,587.56 Bbl in the previous month i.e. June 2018. Bibiyana gas field Produced 279,694 Bbl condensate and ranked top while Jalalabad ranked 2nd by producing 31,062 Bbl. In the previous month i.e. June 2018 Bibiyana gas field and Jalalabad gas field produced 241,906 Bbl and 29,727 Bbl of Condensate respectively.

The month of July 2018 total coal production was 4080.50 Ton. In the previous month i.e. June 2018 total coal production was 25,193 Ton. It indicates that 21,112 Ton less Coal was produced compared to previous month.

Table of Contents

Gas Report	Page No.
Summary	1
summary of Reserve and Production	2
Production comparison between April 2018 & July 2018	3
Monthly Production by Fields & Wells up to July 2018	4-11
Monthly Condensate Production by Fields up to July 2018	12-13
Monthly Water Production by Fields from July 2018	14-15
Conditions of Field and Well up to July 2018	16-20
Chart	
Reserve, Production and Remaining Reserve as of July 2018	21
Daily Average Gas Production from April 2012 to July 2018	22
Field wise Daily Average Production as of July 2018	23
Well wise Daily Average Production-BGFCL as of July 2018	24
Well wise Daily Average Production-BAPEX and SGFL, July 2018	25
Well wise Daily Average Production-IOC and JVA, July 2018	26
Comparison of Field wise Daily Average Gas Production between Jan 18 & July 18	27
Daily Average Production by Operator, July 2018	28
Comparison of Operator wise daily average Production between April 18 & July 18	29
Daily Average Production – National vs IOC’s, July 2018	30
Comparison of daily avg Gas Production- National vs IOC’s between April 18 & July 18	31
Daily Average Production IOC’s and JVA, July 2018	32
Monthly Condensate Production, July 2018	33
Coal Report	
Summary	34-35
Barapukuria Coal Mine-MPM and P Contract (BCMCL)	36
Barapukuria Coal Mine Daywise Data Graph for July 2018	37

Summary of Reserve and Production As of 31 July 2018

Gas Initially Place (Proven + Probable)	35,796.19 Bcf	35.80 Tcf
Recoverable (Proven + Probable)	28,685.40 Bcf	28.69 Tcf
Gas Production in July 2018	84.80 Bcf	0.08 Tcf
Cumulative Production as of July 2018	16048.19 Bcf	16.05 Tcf
Remaining Reserve	12,637.21 Bcf	12.64 Tcf

NOTE: Reserve figure based on "Updated Report on Bangladesh Gas Reserve Estimation 2010", prepared by Gustavson Associates LLC, USA

Summary of Reserve and Production

(As of July 2018)



Sl No.	Field	2P	GIIP	2P Reserve	Gas Prod. In July '18	Cum. Gas Production	Remaining Reserve	Cum. Cond. Production	Gas in Bc
1	Begumganj		47.0	33.0	0.0	0.9	32.1		0
2	Shahbazpur		415.0	261.0	1.8	49.3	211.7		5
3	Semutang		654.0	318.0	0.0	12.9	305.1		5
4	Fenchuganj		483.0	329.0	0.3	156.4	172.6		114
5	Salda Nadi		393.0	275.0	0.1	90.4	184.6		58
6	Srikail*		230.0	161.0	1.0	76.1	84.9		114
7	Sundalpur *		62.2	50.2	0.2	11.0	39.2		0
8	Rupganj		48.0	33.6	0.0	0.7	32.9		1
	Bapex		2,332.2	1,460.8	3.5	397.6	1,063.2		298
9	Meghna		122.0	101.0	0.4	67.1	33.9		104
10	Narshingdi		405.0	345.0	0.8	195.8	149.2		411
11	Kamta		72.0	50.0	0.0	21.1	28.9		4
12	Habiganj		3,981.0	2,787.0	6.8	2,393.6	393.4		126
13	Bakhrabad		1,825.0	1,387.0	0.9	807.8	579.2		1,018
14	Titas		9,039.0	7,582.0	16.3	4,572.9	3,009.1		5,158
	BGFCL		15,444.0	12,252.0	25.2	8,058.4	4,193.6		6,822
15	Sangu		976.0	771.0	0.0	489.5	281.5		37
	Santos/Cairn		976.0	771.0	0.0	489.5	281.5		37
16	Bibiyana		5,321.0	4,532.0	40.7	3,398.4	1,133.6		19,792
17	Moulavi Bazar		630.0	494.0	1.1	318.3	175.7		117
18	Jalalabad**		1,346.0	1,346.0	7.7	1,241.0	105.0		9,994
	Chevron		7,297.0	6,372.0	49.5	4,957.7	1,414.3		29,903
19	Feni		185.0	130.0	0.0	63.0	67.0		110
	Niko		185.0	129.6		63.0	66.6		110
20	Kailas Tila		3,463.0	2,880.0	1.9	716.9	2,163.1		7,718
21	Sylhet		580.0	408.0	0.1	213.6	194.4		791
22	Rashidpur		3,887.0	3,134.0	1.6	619.7	2,514.3		769
23	Chattak		677.0	474.0	0.0	25.8	448.2		4
24	Beani Bazar		225.0	137.0	0.3	93.9	43.1		1,546
	SGFL		8,832.0	7,033.0	3.9	1,670.0	5,363.0		10,829
25	Bangura		730.0	621.0	2.6	412.0	209.0		1,026
	Tullow		730.0	621.0	2.6	412.0	209.0		1,026
26	Kutubdia		65.0	46.0	0.0	0.0	46.0		0
	Total		35,796.2	28,685.4	84.80	16,048.2	12,637.2		49,025

* Preliminary reserve estimated by BAPEX

** 2P reserve estimation by Petrobangla has crossed the limit. So 2P reserve is estimated as GIIP reserve now.

Production comparison between June 2018 & July 2018



SI No.	Field	Gas Prod. (MMcf) in June'18	Daily Avg. (MMcfd) in June'18	Gas Prod. (MMcf) in July'18	Daily Avg. (MMcfd) in July'18
1	Begumganj	0	0	0	0
2	Shahbazpur	1753	58	1816	59
3	Semutang	30	1	29	1
4	Fenchuganj	304	10	331	11
5	Salda Nadi	58	2	99	3
6	Srikail	996	33	1047	34
7	Sundalpur	200	7	208	7
8	Rupganj	0	0	0	0
Bapex		3341	111	3531	114
9	Meghna	377	13	383	12
10	Narshingdi	790	26	840	27
11	Kamta	0	0	0	0
12	Habiganj	6535	218	6790	219
13	Bakhrabad	897	30	912	29
14	Titas	15699	523	16320	526
BGFCL		24296	810	25245	814
15	Sangu	0	0	0	0
Santos/Cairn		0	0	0	0
16	Bibiyana	33568	1119	40738	1314
17	Moulavi Bazar	740	25	1050	34
18	Jalalabad	7257	242	7667	247
Chevron		41566	1386	49455	1595
19	Feni	0	0	0	0
Niko		0	0	0	0
20	Kailas Tila	1856	62	1911	62
21	Sylhet	131	4	135	4
22	Rashidpur	1502	50	1623	52
23	Chattak	0	0	0	0
24	Beani Bazar	271	9	279	9
SGFL		3760	125	3948	127
25	Bangura	2582	86	2621	85
Tullow		2582	86	2621	85
26	Kutubdia	0	0	0	0
Total		75546	2518	84801	2736

Monthly Production by Field and Well upto July 2018



Well	Jan	Feb	Mar	Apr	May	Jun	Jul	Aug	Sep	Oct	Nov	Dec	Total	Cumulative	2017	2016	2015
Field :	Bakharabad																
BKB-1	0	0	0	0	0	0	0						0	141,167	0	0	1,030
BKB-2	44.35	39	41	38	38	37	38						275	86,400	543	731	873
BKB-3	202.35	184	182	158	160	161	165						1,212	160,068	2,249	2,223	1,620
BKB-4	0	0	0	0	0	0	0							55,872			
BKB-5	155.66	141	152	149	155	149	154						1,056	58,045	1,847	1,814	1,821
BKB-6	0	0	0	0	0	0	0						0	50,069			
BKB-7	0	0	0	0	0	0	0						0	107,750	0	0	1,399
BKB-8	198.43	177	192	161	165	165	166						1,224	125,468	3,462	4,142	3,536
BKB-9	320.41	280	304	291	285	277	280						2,036	19,826	3,637	4,160	4,287
BKB-10	121.80	108	117	110	113	108	110						787	3,164	1,453	924	
Field Total:	1,043	928	987	907	915	897	912	0	0	0	0	0	6,590	807,828	13,190	13,070	14,565
Daily Avg.(mmscfd)	34	33	32	30	30	30	29	0	0	0	0	0	31		36	36	40
Field :	Bangura																
Bangura-1	467	403	411	383	379	369	382						2,793	87,432	4,914	4,886	5,316
Bangura-2	628	552	610	578	697	568	572						4,206	76,941	7,837	9,200	10,167
Bangura-3	662	587	640	620	625	602	615						4,351	93,813	8,662	10,038	10,942
Bangura-6	358	322	740	698	358	345	353						3,174	7,274	4,100		
Bangura-5	759	670	351	342	736	698	699						4,256	146,589	9,699	11,514	12,347
Field Total:	2,875	2,533	2,753	2,622	2,794	2,582	2,621	0	0	0	0	0	18,780	412,049	35,212	35,639	38,773
Daily Avg.(mmscfd)	93	90	89	87	90	86	85	0	0	0	0	0	89		96	98	106
Field :	Beani Bazar																
BB-1	0	0	0	0	0	0	0						0	35,481	1,023	33	0
BB-2	281	251	279	272	279	271	279						1,912	58,372	3,282	3,431	3,477
Field Total:	281	251	279	272	279	271	279	0	0	0	0	0	1,912	93,853	4,306	3,464	3,477
Daily Avg.(mmscfd)	9	9	9	9	9	9	9	0	0	0	0	0	9		12	9	10
Field :	Bibiwana																
BY-1	2,807	2,069	2,766	2,778	3,056	2,612	2,980						19,069	365,210	35,595	35,050	31,887
BY-2	1,913	1,349	1,823	1,764	1,902	1,567	1,832						12,150	265,188	23,957	20	16,096
BY-3	637	740	965	672	756	677	992						5,439	234,460	9,904	16,873	19,957
BY-4	1,342	1,062	2,189	2,345	2,924	2,280	2,708						14,850	166,829	6,571	7,322	11,070
BY-5	364	323	186	70	54	50	790						1,837	167,674	8,117	9,229	10,856

Monthly Production by Field and Well upto July 2018



Well	Jan	Feb	Mar	Apr	May	Jun	Jul	Aug	Sep	Oct	Nov	Dec	Total	Cumulative	2017	2016	2015
BY-6	1,008	657	986	1041	967	816	968						6,443	216,882	11,879	15,208	16,520
BY-7	471	1,286	1,881	2468	528	262	2367						9,262	230,690	32,874	33,040	10,895
BY-8	785	562	740	790	783	734	784						5,179	130,502	12,486	2,987	5,237
BY-9	53	0	12	0	0	0	274						339	120,863	6,247	6,820	7,197
BY-10	2,605	1,922	2,790	2319	2,895	2,541	2617						17,690	321,733	32,967	33,582	32,542
BY-11	550	802	1,035	1042	1,192	1,055	1091						6,767	114,581	6,813	9,357	12,458
BY-12	630	437	635	558	613	567	571						4,012	119,881	8,284	10,574	12,677
BY-13	782	768	1,144	1226	1,231	911	1199						7,261	67,050	11,842	15,603	19,645
BY-14	1,043	752	1,176	1114	967	741	1038						6,830	85,921	15,354	15,170	25,721
BY-15	2,006	1,399	2,085	1931	2,103	1,807	2111						13,441	86,067	19,111	17,698	16,439
BY-16	826	615	878	904	777	617	843						5,460	57,269	12,541	15,844	18,446
BY-17	1,401	885	1,389	1412	1,244	1,420	1401						9,152	69,420	15,412	15,463	23,304
BY-18	2,552	1,879	2,613	2665	2,548	2,568	2593						17,418	103,331	29,509	33,072	23,332
BY-19	797	588	763	717	653	658	686						4,862	28,796	9,859	9,383	4,691
BY-20	427	513	706	717	691	706	702						4,462	34,467	6,533	9,282	14,190
BY-21	943	688	914	801	847	717	818						5,728	31,282	13,246	8,533	3,775
BY-22	2,150	1,536	2,231	1952	2,174	1,777	2082						13,900	96,944	27,093	33,387	22,565
BY-23	2,684	1,990	2,699	2614	2,799	2,368	2756						17,909	37,913	15,333	4,405	266
BY-24	1,142	715	1,101	875	1,228	1,205	1254						7,519	52,415	13,484	15,265	13,497
BY-25	2,332	1,855	2,275	2209	2,629	2,223	2344						15,868	92,742	30,331	33,282	13,260
BY-26	2,706	2,004	2,775	2533	2,931	2,691	2938						18,579	100,291	30,446	33,167	18,099
Field Total:	34958	27394	38761	37517	38490	33568	40738	0	0	0	0	0	251,426	3,398,400	445,787	439,615	404,621
Daily Avg.(mmscfd)	1128	978	1250	1251	1242	1119	1314	0	0	0	0	0	1,186		1,221	1,204	1,109
Field :	Chattak																
Ch-1	Production Suspended													25,834			
Field Total:														25,834			
Daily Avg.(mmscfd)																	
Field :	Fenchuganj																
Fenchuganj-2	0	0	0	0	0	0	0	0	0	0	0	0	0	38,169	0	0	0
Fenchuganj-3	395	352	349	241	239	214	225						2,016	89,468	6,192	7,606	7,564
Fenchuganj-4	14	30	32	3	20	90	106						295	28,760	441	3,189	5,834
Field Total:	409	382	381	244	260	304	331	0	0	0	0	0	2,310	156,396	6,633	10,795	13,398

Monthly Production by Field and Well upto July 2018



Well	Jan	Feb	Mar	Apr	May	Jun	Jul	Aug	Sep	Oct	Nov	Dec	Total	Cumulative	2017	2016	2015
Daily Avg.(mmscfd)	13	14	12	8	8	10	11	0	0	0	0	0	11		18	30	37
Field :	Feni																
Feni-1	Production Suspended													34,214			
Feni-2	Production Suspended													6,119			
Feni-3	Production Suspended													2,176			
Feni-4	Production Suspended													14,386			
Feni-5	Production Suspended													6,127			
Field Total:														63,023			
Daily Avg.(mmscfd)																	
Field :	Habiganj																
Hbj-1	0	0	0	0	0	0	0						0	275,901	0	0	0
Hbj-2	0	0	0	0	0	0	0						0	275,704	0	0	0
Hbj-3	1,118	1,008	1,120	1,084	1,120	1,077	1,126						7,652	371,655	13,151	13,227	13,080
Hbj-4	1,118	1,008	1,120	1,084	1,120	1,077	1,126						7,652	366,112	13,151	13,227	13,080
Hbj-5	808	728	809	783	809	778	813						5,526	293,704	9,497	9,552	9,446
Hbj-6	467	421	468	453	468	450	470						3,195	159,918	5,491	5,523	5,462
Hbj-7	1,243	1,126	1,243	1,201	1,241	1,196	1,234						8,484	247,070	14,565	14,685	14,659
Hbj-8	0	0	0	0	0	0	0						0	11,023	0	0	0
Hbj-9	0	0	0	0	0	0	0						0	52,652	0	0	0
Hbj-10	1,196	1,084	1,196	1,156	1,195	1,151	1,188						8,167	247,371	14,058	14,629	14,659
Hbj-11	839	760	839	811	838	807	834						5,729	92,458	10,398	11,247	11,367
Field Total:	6,790	6,135	6,793	6,572	6,792	6,535	6,790	0	0	0	0	0	46,406	2,393,568	80,313	82,091	81,752
Daily Avg.(mmscfd)	219	219	219	219	219	218	219	0	0	0	0	0	219		220	225	224
Field :	Jalalabad																
JB-1	1,048	791	800	871	898	857	898						6,164	241,464	9,142	11,951	18,014
JB-2	1,140	1,054	1,130	1,086	1,115	1,027	1,115						7,668	274,291	14,517	17,057	20,012
JB-3	1,510	1,414	1,515	1,448	1,487	1,413	1,487						10,273	333,398	19,162	21,086	26,552
JB-4	586	568	621	452	465	440	465						3,597	276,776	7,045	8,313	20,427
JB-6	1,510	1,415	1,513	1,448	1,487	1,412	1,487						10,271	52,231	19,524	19,136	3,300

Monthly Production by Field and Well upto July 2018



Well	Jan	Feb	Mar	Apr	May	Jun	Jul	Aug	Sep	Oct	Nov	Dec	Total	Cumulative	2017	2016	2015
JB-7	1,202	1,021	1,159	1086	1,115	1,058	1115						7,756	24,093	10,324	5,254	760
JB-8	1,125	1,026	1,098	1071	1,099	1,051	1100						7,569	38,706	14,513	16,252	372
Field Total:	8,121	7,290	7,836	7,461	7,665	7,257	7667	0	0	0	0	0	53,297	1,240,959	94,226	99,048	89,437
Daily Avg.(mmscfd)	262	260	253	249	247	242	247	0	0	0	0	0	251		258	271	245
Field :	Kailas Tila																
KTL-1	0	0	0	0	0	0	0						0	204,347	0	0	0
KTL-2	620	555	611	592	609	594	611						4,192	175,148	7,242	7,282	7,111
KTL-3	279	226	249	240	248	241	248						1,731	136,604	3,255	5,003	5,920
KTL-4	293	261	289	279	291	283	292						1,988	94,748	3,680	3,499	4,009
KTL-5	0	0	0	0	0	0	0						0	17,923	0	0	0
KTL-6	768	683	758	732	755	738	760						5,195	87,334	9,086	8,975	8,732
KTL-7	0	0	0	0	0	0	0						0	816	0	329	487
Field Total:	1,961	1,724	1,907	1,844	1,904	1,856	1911	0	0	0	0	0	13,106	716,919	23,263	25,088	26,259
Daily Avg.(mmscfd)	63	62	62	61	61	62	62	0	0	0	0	0	62		64	69	72
Field :	Kamta																
Kamta-1	Production Suspended														21,139		
Field Total:															21,139		
Daily Avg.(mmscfd)																	
Field :	Meghna																
M-1	396	356	390	380	385	377	383						2,666	67,101	4,625	4,425	3,838
Field Total:	396	356	390	380	385	377	383	0	0	0	0	0	2,666	67,101	4,625	4,425	3,838
Daily Avg.(mmscfd)	13	13	13	13	12	13	12	0	0	0	0	0	13		13	12	11
Field :	Moulavi Bazar																
MV Bazar-2	217	191	218	215	216	142	220						1,419	53,155	2,866	3,201	2,889
MV Bazar-3	356	318	343	334	332	230	344						2,257	156,354	4,705	5,394	6,116
MV Bazar-4	254	238	301	329	359	240	309						2,030	56,995	3,945	4,141	2,927
MV Bazar-5	Production Suspend		0	0	0	0	0	0	0	0	0	0		66			
MV Bazar-6	174	156	175	168	180	127	174						1,154	15,769	1,676	1,737	2,198
MV Bazar-7	4	3	3	2	3	1	2						19	5,642	152	123	1,433

Monthly Production by Field and Well upto July 2018



Well	Jan	Feb	Mar	Apr	May	Jun	Jul	Aug	Sep	Oct	Nov	Dec	Total	Cumulative	2017	2016	2015
MV Bazar-9	0	1	0	0	0	0	0						1	30,335	0	41	474
Field Total:	1,005	907	1,039	1,049	1,091	740	1050	0	0	0	0	0	6,881	318,316	13,345	14,638	16,037
Daily Avg.(mmscfd)	32	32	34	35	35	25	34	0	0	0	0	0	32		37	40	44
Field :	Narshingdi																
N-1	535	479	523	511	524	493	526						3,591	142,005	6,279	6,242	6,239
N-2	308	282	321	309	319	297	314						2,150	53,815	3,962	4,122	3,914
Field Total:	843	761	845	820	843	790	840	0	0	0	0	0	5,741	195,819	10,241	10,364	10,154
Daily Avg.(mmscfd)	27	27	27	27	27	26	27	0	0	0	0	0	27		28	28	28
Field :	Rashidpur																
RP-1	568	508	562	538	554	507	549						3,785	164,342	6,625	6,639	6,423
RP-2	0	0	0	0	0	0	0							82,474			
RP-3	307	276	303	291	302	291	301						2,071	129,739	3,730	3,877	4,177
RP-4	289	259	284	273	281	244	276						1,905	126,573	3,516	3,675	3,683
RP-5	0	0	0	0	0	0	0							25,647			
RP-6	0	0	0	0	0	0	0						0	9,983	0	0	0
RP-7	187	169	186	178	185	158	182						1,243	63,473	2,225	2,355	2,236
RP-8	318	287	316	303	306	302	315						2,147	17,484	3,977	4,422	5,115
Field Total:	1,668	1,498	1,650	1,583	1,628	1,502	1623	0	0	0	0	0	11,152	619,715	20,074	20,969	21,634
Daily Avg.(mmscfd)	54	54	53	53	53	50	52	0	0	0	0	0	53		55	57	59
Field :	Salda Nadi																
Salda-1	0	0	0	0	0	0	0	0	0	0	0	0	0	36,904	0	0	0
Salda-2	0	0	0	0	0	0	0	0	0	0	0	0	0	28,495	0	0	0
Salda-3	49	52	54	54	56	53	86						404	24,917	1,514	2,350	3,546
Salda-4	10	7	5	6	6	5	13						51	98	14	34	
Field Total:	59	59	59	59	62	58	99	0	0	0	0	0	455	90,414	1,527	2,383	3,546
Daily Avg.(mmscfd)	2	2	2	2	2	2	3	0	0	0	0	0	2		4	7	10
Field :	Sangu																
Sangu-1	0	0	0	0	0	0	0	0	0	0	0	0	0	116,191	0	0	0

Monthly Production by Field and Well upto July 2018



Well	Jan	Feb	Mar	Apr	May	Jun	Jul	Aug	Sep	Oct	Nov	Dec	Total	Cumulative	2017	2016	2015	
Sangu-3z	0	0	0	0	0	0	0	0	0	0	0	0	0	131,796	0	0	0	
Sangu-4	Production Suspended						0	0	0	0	0	0	0	87,280				
Sangu-5	Production Suspended						0	0	0	0	0	0	0	61,674				
Sangu-7	Production Suspended						0	0	0	0	0	0	0	18,202				
Sangu-8	Production Suspended						0	0	0	0	0	0	0	37,619				
Sangu-9	0	0	0	0	0	0	0	0	0	0	0	0	0	30,638	0	0	0	
Sangu-10	Production Suspended						0	0	0	0	0	0	0					
Sangu-11	0	0	0	0	0	0	0	0	0	0	0	0	0	6,067	0	0	0	
Field Total:	0	0	0	0	0	0	0	0	0	0	0	0	0	489,467	0	0	0	
Daily Avg.(mmscfd)	0	0	0	0	0	0	0	0	0	0	0	0	0		0	0	0	
Field :	Semutang																	
Semutang-5	39	31	39	33	29	25	23							218	11,992	471	946	1,389
Semutang-6	8	7	8	7	6	6	6							48	920	66	0	15
Field Total:	47	37	47	40	36	30	29	0	0	0	0	0	0	266	12,912	537	946	1,403
Daily Avg.(mmscfd)	2	1	2	1	1	1	1	0	0	0	0	0	1		1	3	4	
Field :	Shahbazpur																	
Shahbazpur-1	134	0	0	0	0	0	0							134	21,358	4,835	3,623	2,268
Shahbazpur-2	324	5	423	598	648	689	728							3,415	7,847	4,243	189	0
Shahbazpur-3	291	444	453	369	406	471	472							2,908	10,012	1,162	3,116	2,826
Shahbazpur-4	452	647	643	458	599	592	616							4,007	10,074	1,801	1,091	3,175
Field Total:	1,202	1,095	1,519	1,425	1,653	1,753	1,816	0	0	0	0	0	10,463	49,291	12,041	8,019	8,269	
Daily Avg.(mmscfd)	39	39	49	47	53	58	59	0	0	0	0	0	49		33	22	23	
Field	Srikail																	
Srikail-2	440	403	435	423	430	409	439							2,979	35,769	5,384	6,064	6,150
Srikail-3	382	340	378	359	369	350	364							2,542	33,100	4,944	6,607	7,919
Srikail-4	265	239	264	250	258	237	244							1,757	7,232	3,439	2,035	

Monthly Production by Field and Well upto July 2018



Well	Jan	Feb	Mar	Apr	May	Jun	Jul	Aug	Sep	Oct	Nov	Dec	Total	Cumulative	2017	2016	2015
Field Total:	1,086	982	1,077	1,032	1,057	996	1047	0	0	0	0	0	7,278	76,101	13,767	14,707	14,070
Daily Avg.(mmscfd)	35	35	35	34	34	33	34	0	0	0	0	0	34		38	40	39
Field :	Sundalpur																
Sundalpur -1	0	0	0	0	0	0	0						0	9,809	0	552	1,425
Sundalpur -2	51	142	158	178	207	200	208						1,145	1,145	0	0	0
Field Total:	51	142	158	178	207	200	208	0	0	0	0	0	1,145	10,954	0	552	1,425
Daily Avg.(mmscfd)	2	5	5	6	7	7	7	0	0	0	0	0	5		0	2	4
Field :	Sylhet																
Sylhet-3	Production Suspended													89,032			
Sylhet-6	Production Suspended													91,748			
Sylhet-7	146	133	138	134	136	131	135						953	26,322	2,061	2,212	2,239
Surma-1	0	0	0	0	0	0	0						0	6,528	249	720	791
Field Total:	146	133	138	134	136	131	135	0	0	0	0	0	953	213,630	2,309	2,932	3,031
Daily Avg.(mmscfd)	5	5	4	4	4	4	4	0	0	0	0	0	4		6	8	8
Field :	Titas																
Titas-1	758	665	743	767	786	702	722						5,143	436,255	7,897	9,999	10,555
Titas-2	1,022	875	956	949	972	923	996						6,692	430,675	11,506	11,474	13,015
Titas-3	Production Suspended			0	0	0	0						0	314,888			
Titas-4	1,001	892	964	960	1,000	945	1009						6,771	365,497	11,798	12,782	12,882
Titas-5	1,016	902	984	1002	1,002	944	1004						6,854	423,268	11,869	10,692	13,118
Titas-6	997	919	1,053	1036	1,065	964	1027						7,060	358,159	12,029	12,809	12,958
Titas-7	1,041	924	1,003	988	1,040	988	1025						7,008	339,954	11,707	12,125	12,259
Titas-8	524	472	523	521	542	490	526						3,599	270,080	6,889	7,046	7,162
Titas-9	586	508	552	546	580	552	587						3,911	273,695	8,246	8,467	8,355
Titas-10	651	583	639	631	652	611	651						4,417	195,806	7,431	4,350	2,425
Titas-11	892	812	915	877	837	786	778						5,896	242,799	10,276	9,075	10,129
Titas-12	415	395	436	421	437	417	433						2,956	98,571	5,168	5,326	5,218
Titas-13	623	555	619	599	613	606	605						4,220	187,359	7,879	9,553	10,106
Titas-14	673	590	645	631	652	593	609						4,392	147,175	8,309	8,888	9,582
Titas-15	433	404	463	490	507	467	487						3,251	137,221	7,973	11,777	12,315
Titas-16	782	677	747	726	745	704	738						5,119	142,860	10,060	11,333	11,966

Monthly Production by Field and Well upto July 2018



Well	Jan	Feb	Mar	Apr	May	Jun	Jul	Aug	Sep	Oct	Nov	Dec	Total	Cumulative	2017	2016	2015
Titas-17	556	499	560	539	547	533	542						3,776	36,944	7,011	7,359	7,080
Titas-18	587	527	589	569	572	558	558						3,960	35,301	7,168	7,338	7,075
Titas-19	516	481	529	516	534	511	525						3,612	25,546	6,106	6,253	6,309
Titas-20	321	291	323	311	534	308	309						2,396	17,310	3,635	3,645	3,604
Titas-21	249	224	248	240	255	254	261						1,732	7,968	2,800	1,572	0
Titas-22	373	335	363	348	360	355	373						2,506	22,766	4,336	5,497	6,468
Titas-27	508	458	496	481	496	478	496						3,412	26,424	6,136	6,233	6,193
Titas-23	485	442	487	461	474	458	469						3,275	7,686	4,410		
Titas-24	248	224	248	236	236	228	224						1,645	3,928	2,283		
Titas-25	532	479	534	521	543	527	542						3,678	9,568	5,622	269	
Titas-26	816	742	832	805	826	797	827						5,645	15,238	9,210	383	
Field Total:	16,604	14,874	16,451	16,171	16,807	15,699	16,320	0	0	0	0	0	112,927	4,572,942	197,756	184,246	188,773
Daily Avg.(mmscfd)	536	531	531	539	542	523	526	0	0	0	0	0	533		542	505	517
Field :	Begumganj																
Begumganj-3	0	0											0	877	0	85	791
Field Total:	0	0	0	0	0	0	0	0	0	0	0	0	0	877	0	85	791
Daily Avg.(mmscfd)	0	0	0	0	0	0	0	0	0	0	0	0	0		0	0	2
Field :	Rupganj																
Rupganj-1	0	0											0	679	679		
Field Total:	0	0	0	0	0	0	0	0	0	0	0	0	0	679	679		
Daily Avg.(mmscfd)	0	0	0	0	0	0	0	0	0	0	0	0	0		2		
Grand Total (in Bcf)	79.54	67.48	83.07	80.31	83.00	75.55	85	0.00	0.00	0.00	0.00	0.00	553.8	16,048.2	979.8	973.1	945.3
Daily Avg.(mmscfd)	2,566	2,410	2,680	2,677	2,678	2,518	2736	0	0	0	0	0	2,612		2,684	2,666	2,590

Monthly Condensate Production by Fields upto July 2018



Field Name	Jan-18	Feb-18	Mar-18	Apr-18	May-18	Jun-18	Jul-18	Aug-18	Sep-18	Oct-18	Nov-18	Dec-18	Total	Cumulative 000' bbl	2017	2016	2015
Bakhrabad	574	499	381	360	391	390	415						3,010	1,018	6,173	7,091	6,632
Daily Avg.	19	18	12	12	13	13	13	0	0	0	0	0	14		17	229	214
Bangura	8,773	7,740	7,919	7,772	7,948	7,593	7,633						55,378	1,026	103,198	103,416	108,140
Daily Avg.	283	276	255	259	256	253	246	0	0	0	0	0	261		283	3,336	3,488
Beani Bazar	4,559	3,897	4,497	4,321	4,461	4,239	4,304						30,279	1,546	68,202	56,146	55,563
Daily Avg.	147	139	145	144	144	141	139	0	0	0	0	0	143		187	1,811	1,792
Bibiyana	287,672	261,508	280,664	276,022	277,580	241,906	279,694						1,905,045	19,792	3,283,757	3,291,906	2,277,248
Daily Avg.	9,280	9,340	9,054	9,201	8,954	8,064	9,022	0	0	0	0	0	8,986		8,997	106,191	73,460
Chattak	0	0	0	0	0	0	0						0	4			
Daily Avg.	0	0	0	0	0	0	0						0				
Fenchuganj	143	123	135	96	141	121	139						898	114	2,462	6,138	8,895
Daily Avg.	5	4	4	3	5	4	4	0	0	0	0	0	4		7	198	287
Feni	0	0	0	0	0	0	0						0	110	0	0	0
Daily Avg.	0	0	0	0	0	0	0						0		0	0	0
Habiganj	337	303	337	327	327	329	319						2,279	126	3,955	4,143	4,075
Daily Avg.	11	11	11	11	11	11	10	0	0	0	0	0	11		11	134	131
Jalalabad	35,294	31,133	33,027	30,950	31,442	29,727	31,062						222,635	9,994	437,070	528,191	577,549
Daily Avg.	1,139	1,112	1,065	1,032	1,014	991	1,002	0	0	0	0	0	1,050		1,197	17,038	18,631
Kailas Tila	16,735	19,090	17,805	14,349	15,754	15,786	13,661						113,180	7,718	203,979	223,169	250,829
Daily Avg.	540	682	574	478	508	526	441	0	0	0	0	0	534		559	7,199	8,091
Kamta	Production Suspended														4		
Daily Avg.														0		0	
Meghna	649	587	660	641	687	655	667						4,546	104	7,741	7,735	6,952
Daily Avg.	21	21	21	21	22	22	22	0	0	0	0	0	21		21	250	224
Moulavi Bazar	109	90	89	77	83	49	74						572	117	1,128	1,585	1,606
Daily Avg.	4	3	3	3	3	2	2	0	0	0	0	0	3		3	51	52

Monthly Condensate Production by Fields upto July 2018



Field Name	Jan-18	Feb-18	Mar-18	Apr-18	May-18	Jun-18	Jul-18	Aug-18	Sep-18	Oct-18	Nov-18	Dec-18	Total	Cumulative 000' bbl	2017	2016	2015
Narshingdi	1,390	1,226	1,359	1,329	1,388	1,288	1,364						9,344	411	16,656	17,534	17,840
Daily Avg.	45	44	44	44	45	43	44	0	0	0	0	0	44		46	566	575
Rashidpur	718	564	966	1,136	1,423	1,282	1,361						7,449	769	10,723	14,938	17,853
Daily Avg.	23	20	31	38	46	43	44	0	0	0	0	0	35		29	482	576
Saldanadi	0	2	0	0	0	0	10						13	58	225	386	550
Daily Avg.	0	0	0	0	0	0	0	0	0	0	0	0	0		1	12	18
Sangu	0	0	0	0	0	0	0						0	37	0	0	0
Daily Avg.	0	0	0	0	0	0	0	0	0	0	0	0	0		0	0	0
Semutang	0	3	4	6	3	1	4						21	5	99	272	531
Daily Avg.	0	0	0	0	0	0	0	0	0	0	0	0	0		0	9	17
Shahbazpur	181	145	198	171	201	203	206						1,306	5	1,791	839	816
Daily Avg.	6	5	6	6	6	7	7	0	0	0	0	0	6		5	27	26
Srikail	2,966	2,608	2,924	2,812	2,578	2,650	2,825						19,363	114	37,879	21,075	10,527
Daily Avg.	96	93	94	94	83	88	91	0	0	0	0	0	91		104	680	340
Sundalpur	0	3	5	3	2	2	2						18	0	0	0	39
Daily Avg.	0	0	0	0	0	0	0	0	0	0	0	0	0		0	0	1
Sylhet	987	772	650	932	931	851	868						5,991	791	15,593	20,532	22,261
Daily Avg.	32	28	21	31	30	28	28	0	0	0	0	0	28		43	662	718
Titas	14,787	13,325	13,121	13,763	13,841	12,515	12,992						94,344	5,158	154,262	133,133	134,637
Daily Avg.	477	476	423	459	446	417	419	0	0	0	0	0	445		423	4,295	4,343
Begumganj	0	0	0	0	0	0	0						0	0	0	0	143
Daily Avg.	0	0	0	0	0	0	0	0	0	0	0	0	0		0	0	5
Rupganj	0	0	0	0	0	0	0						0	1	1,133		
Daily Avg.	0	0	0	0	0	0	0	0	0	0	0	0	0		3		
Total (000'bbl)	376	344	365	355	359	320	358	0	0	0	0	0	2,476	49,025	4,356	4,438	3,499
Daily Avg. (000'bbl)	12.1	12.3	11.8	11.8	11.6	11	11.5	0.0	0.0	0.0	0	0	12		11.9	12.2	9.6

Note: Historical condensate figure of Sangu available from 2006. Sylhet available from August 1964

Monthly Water Production by Fields in July 2018



Field Name	Jan-18	Feb-18	Mar-18	Apr-18	May-18	Jun-18	Jul-18	Aug-18	Sep-18	Oct-18	Nov-18	Dec-18	Total	2,017
Bakhrabad	2,868	2,279	2,356	2,280	2,356	2,304	2,440						16,883	8,419
Daily Avg.	93	81	76	76	76	77	79	0	0	0	0	0	80	
Bangura	3,961	3,560	3,864	3,712	3,852	3,756	3,846						26,551	11,705
Daily Avg.	128	127	125	124	124	125	124	0	0	0	0	0	125	
Beani Bazar	8,498	7,789	8,836	8,831	9,311	9,171	9,518						61,954	24,865
Daily Avg.	274	278	285	294	300	306	307	0	0	0	0	0	292	
Bibiyana	16,080	14,564	17,086	15,346	16,210	14,753	17,196						111,235	47,219
Daily Avg.	519	520	551	512	523	492	555	0	0	0	0	0	525	
Chattak	0	0	0	0	0	0	0						0	
Daily Avg.	0	0	0	0	0	0	0	0	0	0	0	0	0	
Fenchuganj	2,499	2,423	2,553	2,165	3,234	6,760	7,890						27,524	6,700
Daily Avg.	81	87	82	72	104	225	255	0	0	0	0	0	130	
Feni	0	0	0	0	0	0	0						0	0
Daily Avg.	0	0	0	0	0	0	0	0	0	0	0	0	0	0
Habiganj	1,760	1,580	1,772	1,706	1,706	2,721	3,723						14,968	5,197
Daily Avg.	57	56	57	57	55	91	120	0	0	0	0	0	71	
Jalalabad	4,132	4,539	4,717	4,495	4,616	4,662	4,990						32,151	12,915
Daily Avg.	133	162	152	150	149	155	161	0	0	0	0	0	152	
Kailas Tila	3,037	3,171	3,589	3,477	3,620	3,565	2,876						23,334	6,809
Daily Avg.	98	113	116	116	117	119	93	0	0	0	0	0	110	
Kamta	0	0	0	0	0	0	0						0	
Daily Avg.	0	0	0	0	0	0	0	0	0	0	0	0	0	
Meghna	173	168	173	173	175	164	166						1,192	551
Daily Avg.	6	6	6	6	6	5	5	0	0	0	0	0	6	
Moulavi Bazar	326	268	268	657	355	401	892						3,168	754
Daily Avg.	11	10	9	22	11	13	29	0	0	0	0	0	15	
Narshingdi	888	798	884	857	884	844	885						6,040	2,645
Daily Avg.	29	29	29	29	29	28	29	0	0	0	0	0	28	
Rashidpur	10,397	9,335	10,279	9,865	10,982	10,829	12,023						73,710	30,969
Daily Avg.	335	333	332	329	354	361	388	0	0	0	0	0	348	
Saldanadi	8	7	0	0	0	0	83						98	387
Daily Avg.	0	0	0	0	0	0	3	0	0	0	0	0	0	

Monthly Water Production by Fields in July 2018



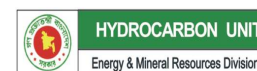
Field Name	Jan-18	Feb-18	Mar-18	Apr-18	May-18	Jun-18	Jul-18	Aug-18	Sep-18	Oct-18	Nov-18	Dec-18	Total	2,017
Sangu	0	0	0	0	0	0	0	0	0	0	0	0	0	0
Daily Avg	0	0	0	0	0	0	0	0	0	0	0	0	0	0
Semutang	416	302	388	379	281	248	288						2,300	719
Daily Avg	13	11	13	13	9	8	9	0	0	0	0	0	11	
Shahbazpur	1,390	1,193	1,646	1,513	1,800	2,103	2,228						11,873	3,912
Daily Avg.	45	43	53	50	58	70	72	0	0	0	0	0	56	
Srikail	1,619	1,439	1,542	1,446	1,509	1,484	1,530						10,570	4,904
Daily Avg.	52	51	50	48	49	49	49	0	0	0	0	0	50	
Sundalpur	3	7	15	16	13	12	15						81	0
Daily Avg.	0	0	0	1	0	0	0	0	0	0	0	0	0	
Sylhet	837	891	1,143	1,474	1,631	1,577	1,816						9,369	1,298
Daily Avg.	27	32	37	49	53	53	59	0	0	0	0	0	44	
Titas	47,689	42,663	47,259	46,962	49,032	47,725	48,956						330,286	126,334
Daily Avg.	1,538	1,524	1,524	1,565	1,582	1,591	1,579	0	0	0	0	0	1,558	
Begumganj	0	0	0	0	0	0	0						0	0
Daily Avg.	0	0	0	0	0	0	0	0	0	0	0	0	0	
Rupganj	0	0	0	0	0	0	0						0	34
Daily Avg.	0	0	0	0	0	0	0	0	0	0	0	0	0	
Total (000'bl)	106,580	96,975	108,371	105,354	111,567	113,079	121,360	0	0	0	0	0	763,286	296
Daily Avg. (000'bb)	3,438	3,463	3,496	3,512	3,599	3,769	3,915	0	0	0	0	0	3,600	1

Conditions of Field and Well upto July 2018



Well	company	well type	Discovery	production start	Drilled depth (ft)	Pressure	Pressure type	Completion Zone
Field : Bakharabad								
BKB-1	BGFCL	Vertical	1969	June,1969	9309		FWHP	J
BKB-2	BGFCL	Directional	1969	October,1981	7496	248-274	FWHP	G
BKB-3	BGFCL	Directional	1969	April,1982	9339	356-412	FWHP	G
BKB-4	BGFCL	Directional	1969	June,1982	9430			D
BKB-5	BGFCL	Directional	1969	Sept,1982	9675	1555-1646	FWHP	B
BKB-6	BGFCL	Directional	1969	March,1989	8785			J
BKB-7	BGFCL	Directional	1969	July,1989	8605		FWHP	J
BKB-8	BGFCL	Directional	1969	Sept,1989	8840	490-523	FWHP	J
BKB-9	BGFCL	Vertical	1969	August,2013	8318	1005-1097	FWHP	G
BKB-10	BGFCL	Directional	1969	June,2016	9291	1010-1102	FWHP	K
Field : Bangura								
Bangura-1	Tullow		2004			887-940	FWHP	D
Bangura-2	Tullow		2004			587-685	FWHP	D/E
Bangura-3	Tullow		2004			719-789	FWHP	D
Bangura-6	Tullow		2004			708-780	FWHP	D
Bangura-5	Tullow		2004			579-621	FWHP	D
Field : Beani Bazar								
BB-1	SGFL		1981	July,1999	13480	580-620	SIWHP	Upper
BB-2	SGFL		1981	July,1999	12048	3210-3220	FWHP	Upper
Field : Bibiyana								
BY-1	Chevron		1998			1547-2007	FWHP	BB60, BB66
BY-2	Chevron		1998			1313-1390	FWHP	BB60, BH20A, BH20E
BY-3	Chevron		1998			1363-1403	FWHP	BB70
BY-4	Chevron		1998			1330-1390	FWHP	BH10
BY-5	Chevron		1998			1254-1299	FWHP	BH20A, BH20B, BH20C, BH20D
BY-6	Chevron		1998			1250-1486	FWHP	BB70
BY-7	Chevron		1998			1454-1566	FWHP	BH10
BY-8	Chevron		1998			1270-1297	FWHP	BH20A, BH20B
BY-9	Chevron		1998			1243-1273	FWHP	BH10
BY-10	Chevron		1998			1465-1533	FWHP	BB60
BY-11	Chevron		1998			1260-1284	FWHP	BH20A, BH20B
BY-12	Chevron		1998			1259-1332	FWHP	BB70
BY-13	Chevron		1998			1300-1356	FWHP	BH20A, BH20B
BY-14	Chevron		1998			1342-1632	FWHP	BH20A, BH20B
BY-15	Chevron		1998			2189-2240	FWHP	BB60
BY-16	Chevron		1998			1381-1644	FWHP	BH10, BH20D

Conditions of Field and Well upto July 2018



Well	company	well type	Discovery	production start	Drilled depth (ft)	Pressure	Pressure type	Completion Zone
BY-17	Chevron		1998			2104-2229	FWHP	BB60
BY-18	Chevron		1998			1904-2218	FWHP	BB60
BY-19	Chevron		1998			1354-1477	FWHP	BH10, BH20A
BY-20	Chevron		1998			1248-1262	FWHP	BH20D, BH20A, BH10
BY-21	Chevron		1998			1333-1348	FWHP	BH20A, BH20B, BH10
BY-22	Chevron		1998			1552-1586	FWHP	BB60
BY-23	Chevron		1998			1739-2021	FWHP	BH10, BH20A, BH20B, BH20C
BY-24	Chevron		1998			1337-2091	FWHP	BB60
BY-25	Chevron		1998			1728-1857	FWHP	BB60, BB66
BY-26	Chevron		1998			1877-2094	FWHP	BB60, BB64
Field : Chattak								
Ch-1	SGFL		1959					
Field : Fenchuganj								
Fenchuganj-2	BAPEX		1988	May, 2004				
Fenchuganj-3	BAPEX		1988	January, 2005		2004-2010		upper
Fenchuganj-4	BAPEX		1988			2037-2065		
Field : Feni								
Feni-1	BAPEX		1981					
Feni-2	BAPEX		1981					
Feni-3	BAPEX		1981					
Feni-4	BAPEX		1981					
Feni-5	BAPEX		1981					
Field : Habiganj								
Hbj-1	BGFCL	Vertical	1963	Feb,1969	11500		FWHP	upper
Hbj-2	BGFCL	Vertical	1963	Feb,1969	5100		FWHP	upper
Hbj-3	BGFCL	Vertical	1963	July,1985	5282	1478-1486	FWHP	upper
Hbj-4	BGFCL	Vertical	1963	May,1985	5249	1460-1467	FWHP	upper
Hbj-5	BGFCL	Directional	1963	Feb,1992	11552	1440-1446	FWHP	upper
Hbj-6	BGFCL	Vertical	1963	Feb,1992	5515	1375-1379	FWHP	upper
Hbj-7	BGFCL	Vertical	1963	April,2000	10236	1331-1139	FWHP	upper
Hbj-8	BGFCL	Vertical	1963	May, 2000	5280			upper
Hbj-9	BGFCL	Vertical	1963	July,1998	5249			upper
Hbj-10	BGFCL	Vertical	1963	Apr, 2000	5133	1322-1331	FWHP	upper
Hbj-11	BGFCL	Vertical	1963	january,2008	10499	1417-1423	FWHP	upper
Field : Jalalabad								
JB-1	Chevron		1989			1333-1436	FWHP	BB60, BB50

Conditions of Field and Well upto July 2018



Well	company	well type	Discovery	production start	Drilled depth (ft)	Pressure	Pressure type	Completion Zone
JB-2	Chevron		1989			1279-1294	FWHP	BB50, BB60
JB-3	Chevron		1989			1332-1375	FWHP	BB50, BB60
JB-4	Chevron		1989			1365-1425	FWHP	BB60
JB-6	Chevron		1989			1354-1362	FWHP	BB60, BB50
JB-7	Chevron		1989			1666-1679	FWHP	BB20
JB-8	Chevron		1989			1362-1370	FWHP	BB50, BB60
Field : Kailas Tila								
KTL-1	SGFL		1962	June, 1983	12417	0	SIWHP	
KTL-2	SGFL		1962	Feb, 1995		2225-2230	FWHP	
KTL-3	SGFL		1962	March, 1995		2470-2495	FWHP	
KTL-4	SGFL		1962	March, 1997		2360-2410	FWHP	
KTL-5	SGFL		1962	Sep, 2006		0	SIWHP	
KTL-6	SGFL		1962	Aug, 2007		2490-2495	FWHP	
KTL-7	SGFL		1962			0	SIWHP	
Field : Kamta								
Kamta-1	BGFCL	Vertical	1981	july,1982	11857			N/A
Field : Meghna								
M-1	BGFCL	Vertical	2004	july,1990	10069	1400-1450	FWHP	A,E,F & G
Field : Moulavi Bazar								
MV Bazar-2	Chevron		1997			800-820	FWHP	BB70
MV Bazar-3	Chevron		1997			800-820	FWHP	BB70
MV Bazar-4	Chevron		1997			946-952	FWHP	BB20
MV Bazar-5	Chevron		1997			0	SIWHP	BB60
MV Bazar-6	Chevron		1997			822-890	FWHP	BB20
MV Bazar-7	Chevron		1997			844-901	FWHP/SIWHP	BB20
MV Bazar-9	Chevron		1997			0	SIWHP	BB46, BB48, BB60
Field : Narshingdi								
N-1	BGFCL	vertical	1990	october,1990	11320	1143-1197	FWHP	BL
N-2	BGFCL	vertical	1990	february,2007	10778	1015-1097	FWHP	BL
Field : Rashidpur								
RP-1	SGFL		1960			1290-1291	FWHP	Upper
RP-2	SGFL		1960			73	SIWHP	Lower
RP-3	SGFL		1960			1548-1568	FWHP	Lower
RP-4	SGFL		1960			1450-1655	FWHP	Lower
RP-5	SGFL		1960			2291	SIWHP	Lower
RP-6	SGFL		1960			870	SIWHP	A

Conditions of Field and Well upto July 2018



HYDROCARBON UNIT

Energy & Mineral Resources Division

Well	company	well type	Discovery	production start	Drilled depth (ft)	Pressure	Pressure type	Completion Zone
RP-7	SGFL		1960			1308-1338	FWHP	Lower
RP-8	SGFL		1960			1600-1625	FWHP	Upper
Field : Salda Nadi								
Salda-1	BAPEX		1995					
Salda-2	BAPEX		1995					
Salda-3	BAPEX	Directional	1995	January, 2012		639-640, 698-700		Upper/Lower
Salda-4	BAPEX		1995					
Field : Sangu								
Sangu-1	BGFCL		1996					
Sangu-3z	BGFCL		1996					
Sangu-4	BGFCL		1996					
Sangu-5	BGFCL		1996					
Sangu-7	BGFCL		1996					
Sangu-8	BGFCL		1996					
Sangu-9	BGFCL		1996					
Sangu-10	BGFCL		1996					
Sangu-11	BGFCL		1996					
Field : Semutang								
Semutang-5	BAPEX		1967			280-508		Lower Zone
Semutang-6	BAPEX		1967			750-1302		
Field : Shahbazpur								
Shahbazpur-1	BAPEX		1995	May, 2009		2310-3543		Lower Zone
Shahbazpur-2	BAPEX		1995			3541-4133		Lower Zone
Shahbazpur-3	BAPEX		1995			4300		Upper Zone
Shahbazpur-4	BAPEX		1995			4250		Upper Zone
Field : Srikail								
Srikail-2	BAPEX		2012			990-1016		Upper & Lower D
Srikail-3	BAPEX		2012			981-1043		Upper & Lower D
Srikail-4	BAPEX		2012			1018-1068		Upper & Lower D
Field : Sundalpur								
Sundalpur -1	BAPEX		2011					
Sundalpur -2	BAPEX		2011					
Field : Sylhet								
Sylhet-3	SGFL		1955	Aug, 1958				
Sylhet-6	SGFL		1955	Aug, 1964		800-850	SIWHP	
Sylhet-7	SGFL		1955	Apr, 2005		1750-1820	FWHP	Lower Bokabil

Conditions of Field and Well upto July 2018

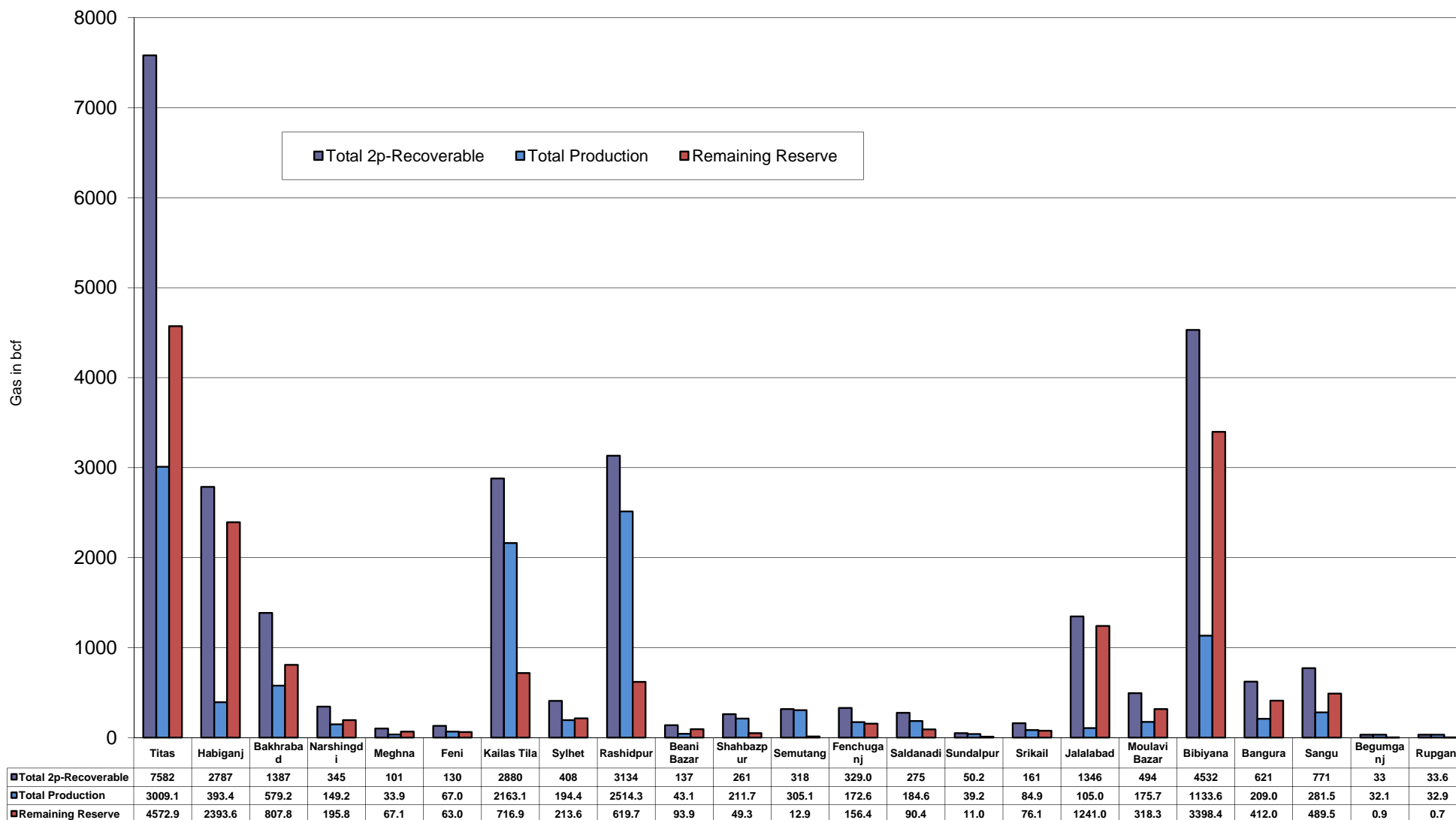


HYDROCARBON UNIT

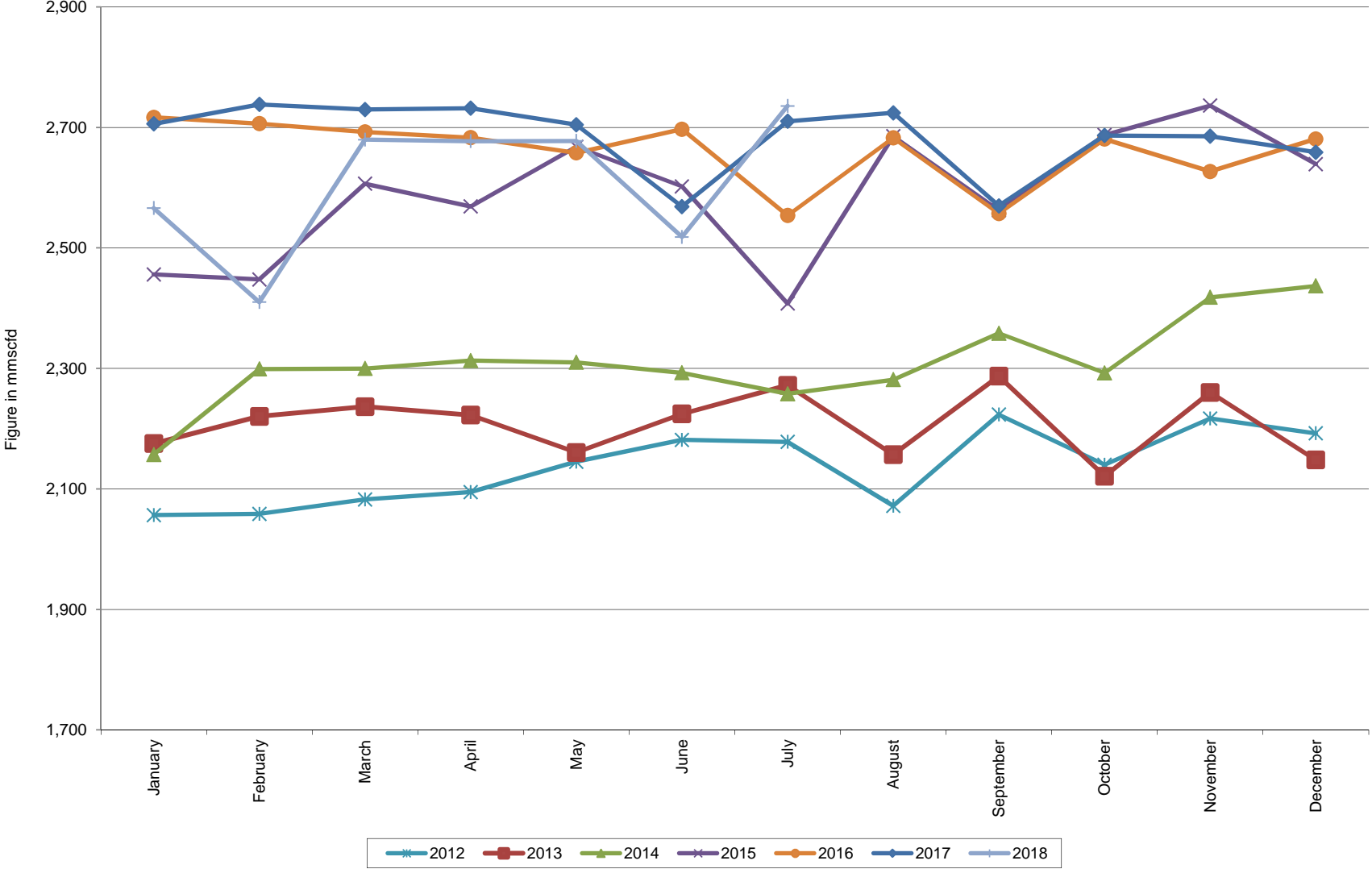
Energy & Mineral Resources Division

Well	company	well type	Discovery	production start	Drilled depth (ft)	Pressure	Pressure type	Completion Zone
Surma-1	SGFL		1955	June, 2010		230	SIWHP	C & D
Field :	Titas							
Titas-1	BGFCL	vertical	1962	Mar,1969	12325	900-925	FWHP	A
Titas-2	BGFCL	vertical	1962	Fen,1969	10574	960-1020	FWHP	A
Titas-3	BGFCL	vertical	1962	sept,1969	9315	0	FWHP	A
Titas-4	BGFCL	vertical	1962	oct,1969	9350	1020-1070	FWHP	A
Titas-5	BGFCL	Directional	1962	jan,1981	10805	990-1035	FWHP	A
Titas-6	BGFCL	vertical	1962	Feb,1984	10072	1195-1225	FWHP	A
Titas-7	BGFCL	Directional	1962	July,1985	11006	1090-1160	FWHP	A
Titas-8	BGFCL	Directional	1962	sept,1985	11760	1000-1030	FWHP	B & C
Titas-9	BGFCL	Directional	1962	jan,1988	11893	1040-1085	FWHP	B & C
Titas-10	BGFCL	Directional	1962	may,1988	12139	1140-1180	FWHP	A
Titas-11	BGFCL	vertical	1962	Jun,1991	10462	1275-1310	FWHP	A
Titas-12	BGFCL	Directional	1962	July,2002	9873	1465-1500	FWHP	A
Titas-13	BGFCL	Directional	1962	June,2000	11487	1085-1115	FWHP	A
Titas-14	BGFCL	Directional	1962	June,2000	11004	1200-1250	FWHP	A
Titas-15	BGFCL	vertical	1962	may,2006	10446	0	FWHP	A
Titas-16	BGFCL	Directional	1962	dec,2005	11673	1205-1225	FWHP	A
Titas-17	BGFCL	vertical	1962	feb,2013	9424	1145-1175	FWHP	A
Titas-18	BGFCL	Directional	1962	august,2013	10932	1165-1190	FWHP	A
Titas-19	BGFCL	Directional	1962	may,2014	12730	1365-1415	FWHP	A
Titas-20	BGFCL	Directional	1962	oct,2013	11585	1370-1440	FWHP	A
Titas-21	BGFCL	Directional	1962	dec,2013	11631	1260-1285	FWHP	A
Titas-22	BGFCL	Directional	1962	march,2014	11926	990-1025	FWHP	A
Titas-27	BGFCL	Directional	1962	april,2014	10292	1245-1265	FWHP	A
Titas-23	BGFCL	Directional	1962	feb,2017	11988	2265-2340	FWHP	C
Titas-24	BGFCL	Directional	1962	oct,2016	12686	1120-1245	FWHP	C
Titas-25	BGFCL	vertical	1962	march,2016	11680	1300-1340	FWHP	A
Titas-26	BGFCL	Directional	1962	july,2016	12618	1840-1875	FWHP	C
Field :	Begumganj							
Begumganj-3	BAPEX		1977					
Field :	Rupganj							
Rupganj-1	BAPEX		2014			38-88		

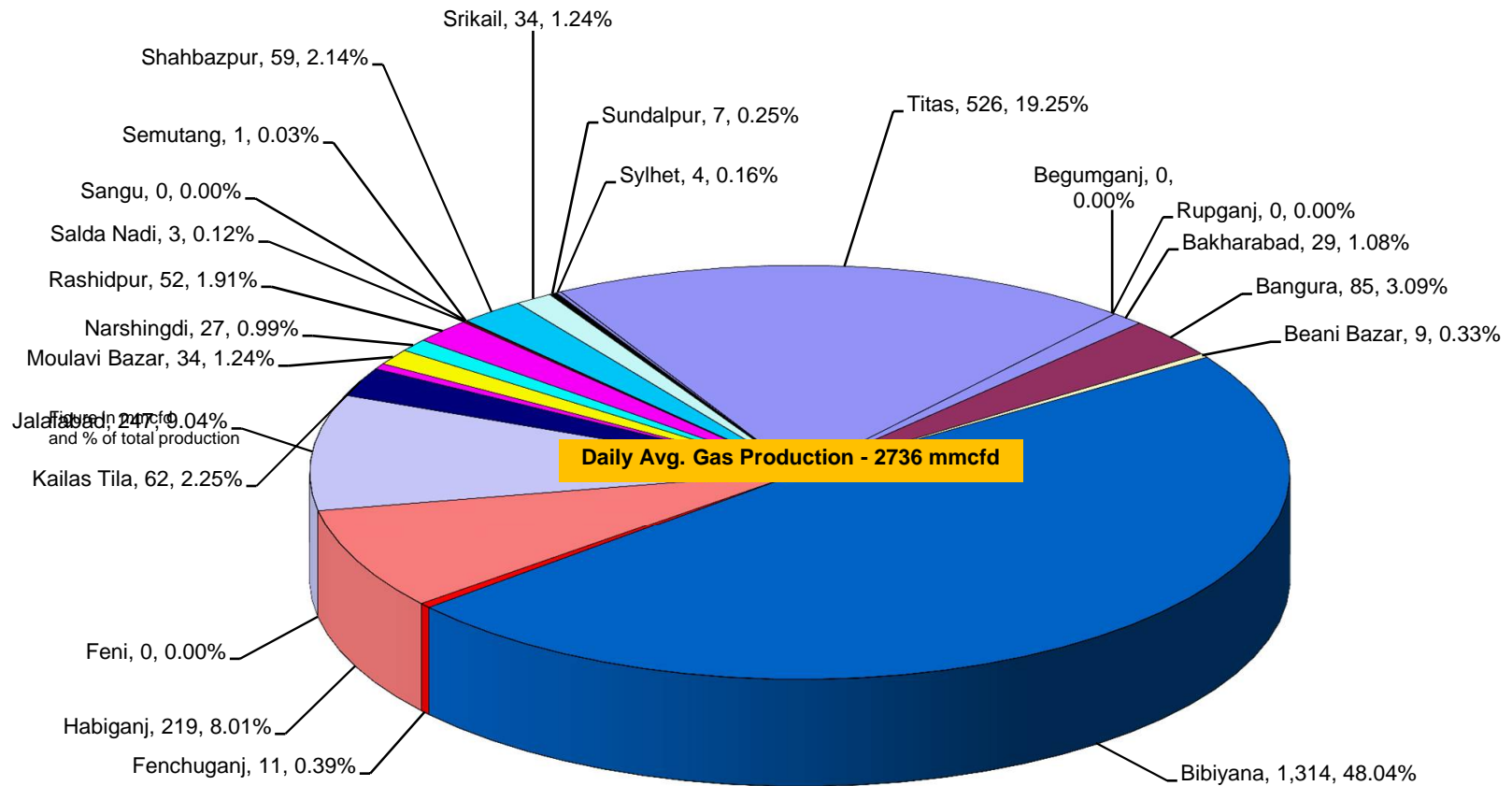
Reserve, Production and Remaining Reserve as of July 2018



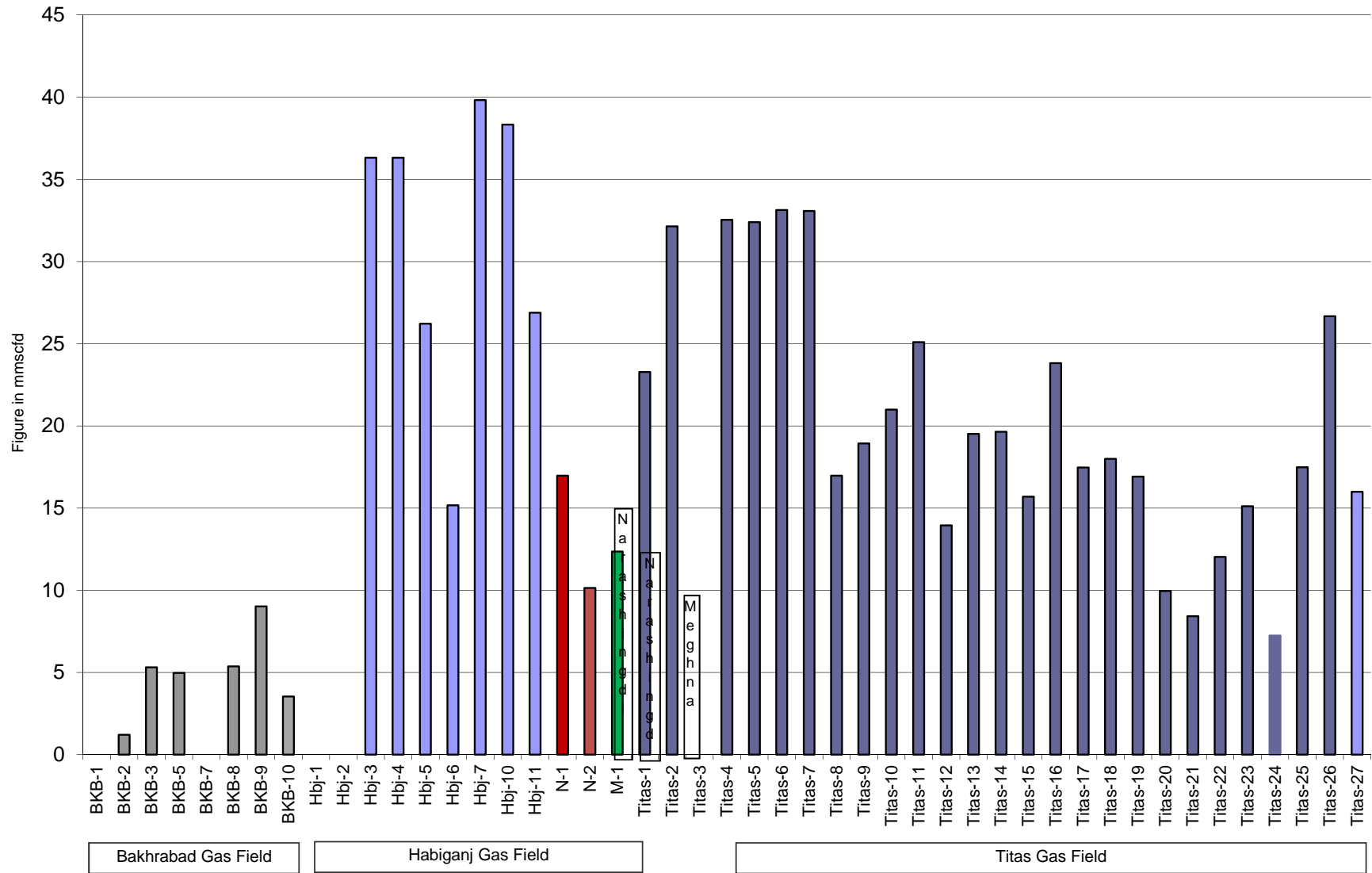
Daily Avg. Production From January 2012 to July 2018



Field Wise Daily Avg. Production July 2018

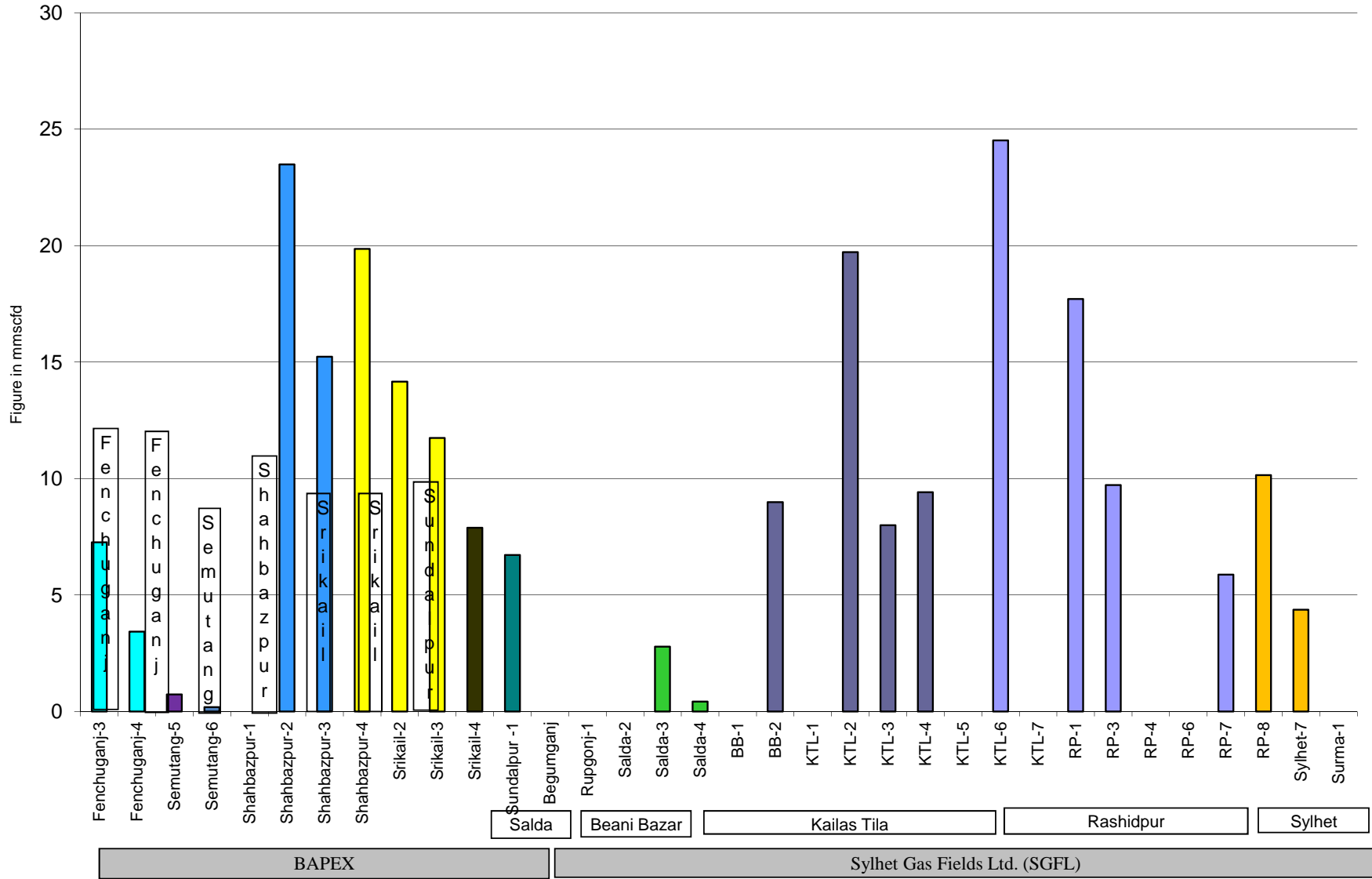


Wellwise Daily Avg. Production- BGFCL July 2018

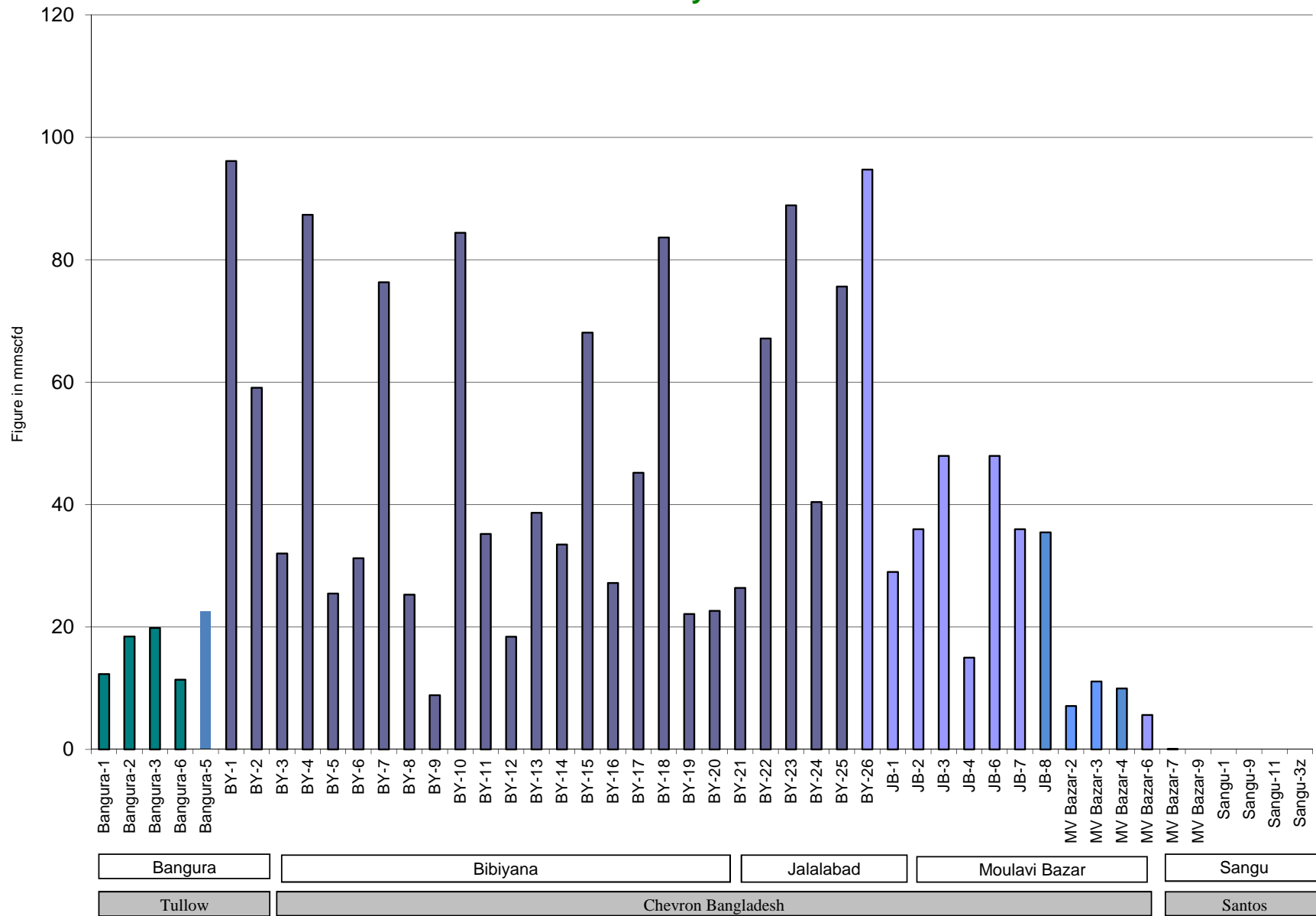


Bangladesh Gas Fields Co. Ltd. (BGFCL)

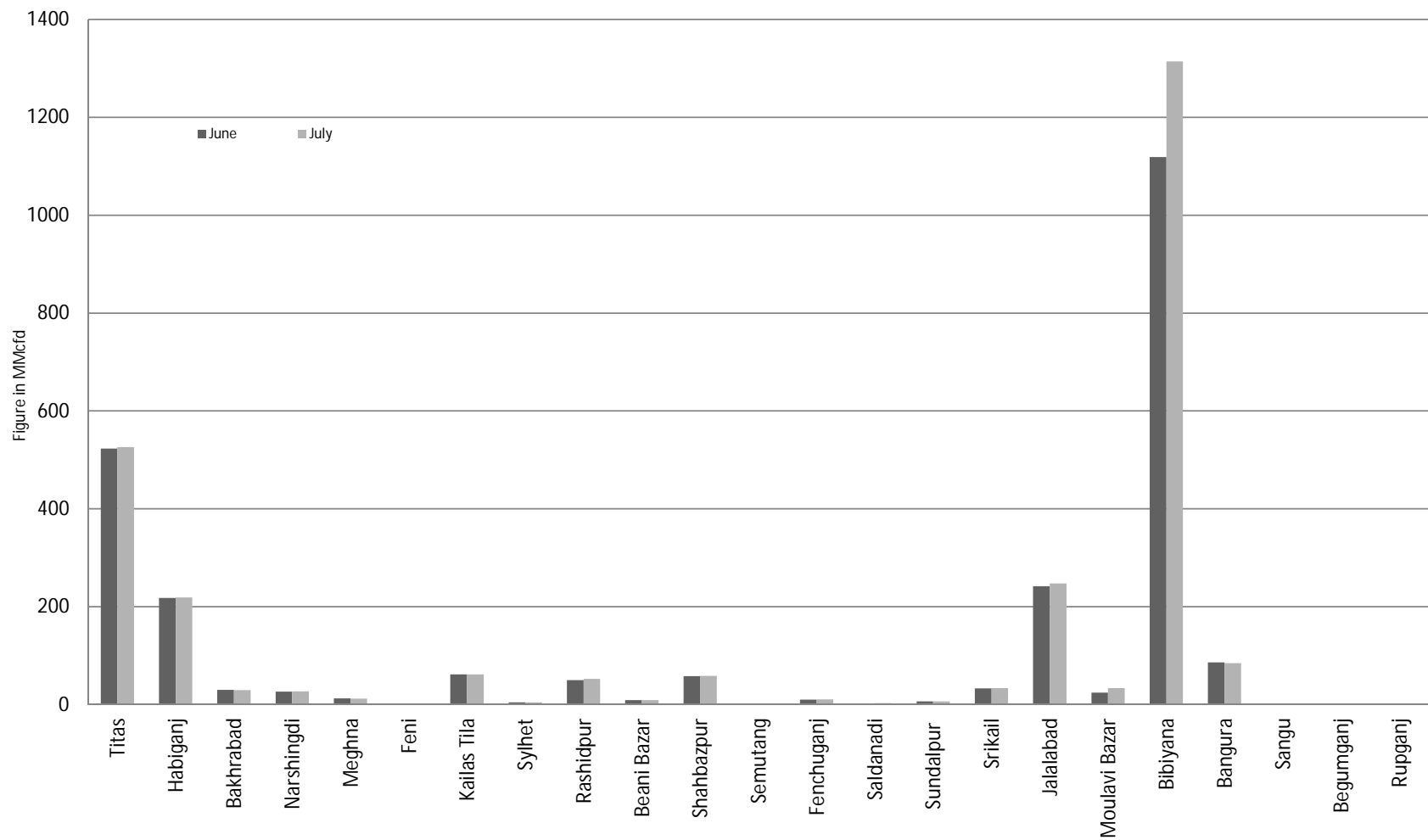
Wellwise Daily Avg. Production- Bapex and SGFL July 2018



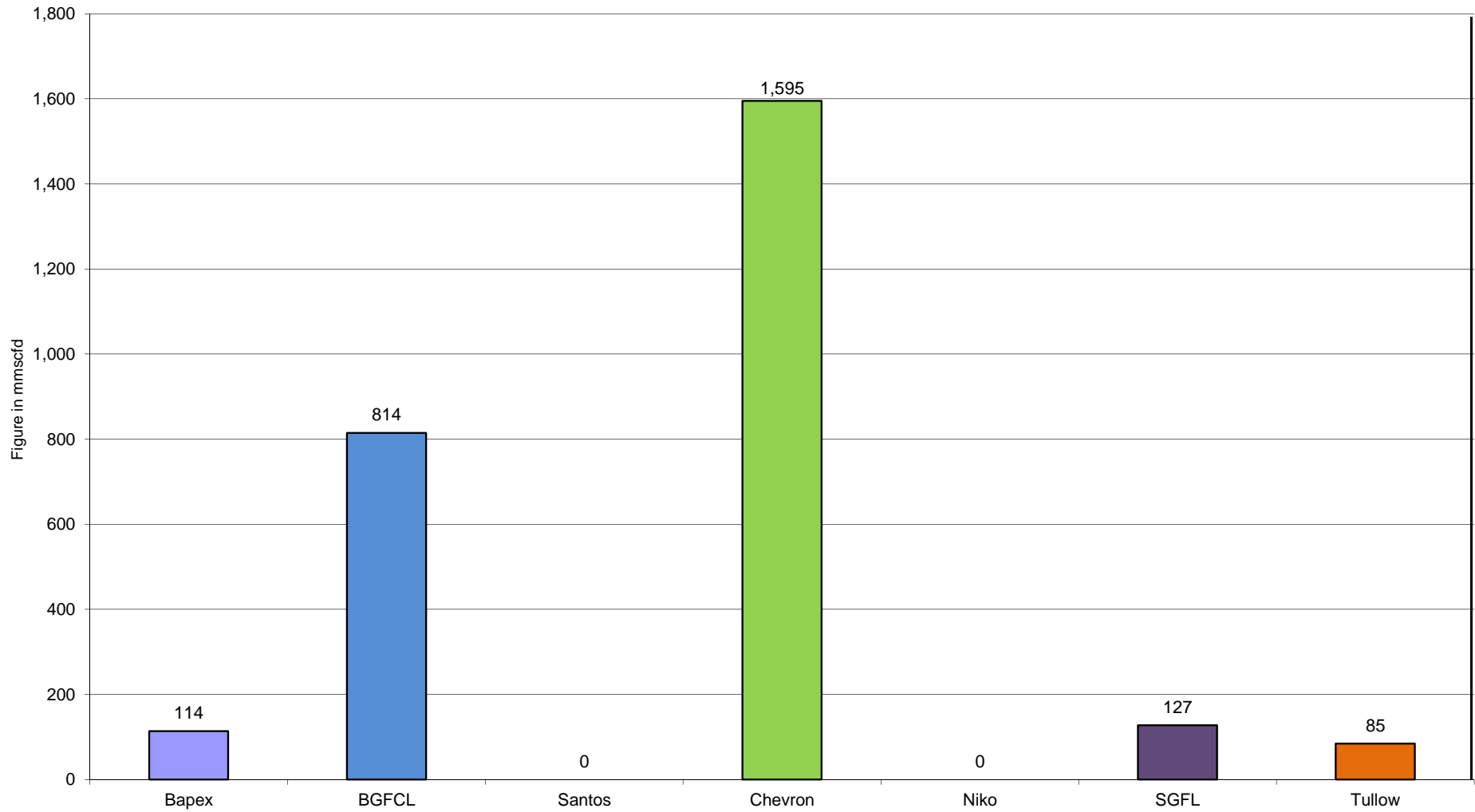
Wellwise Daily Avg. Production- IOC and JVA July 2018



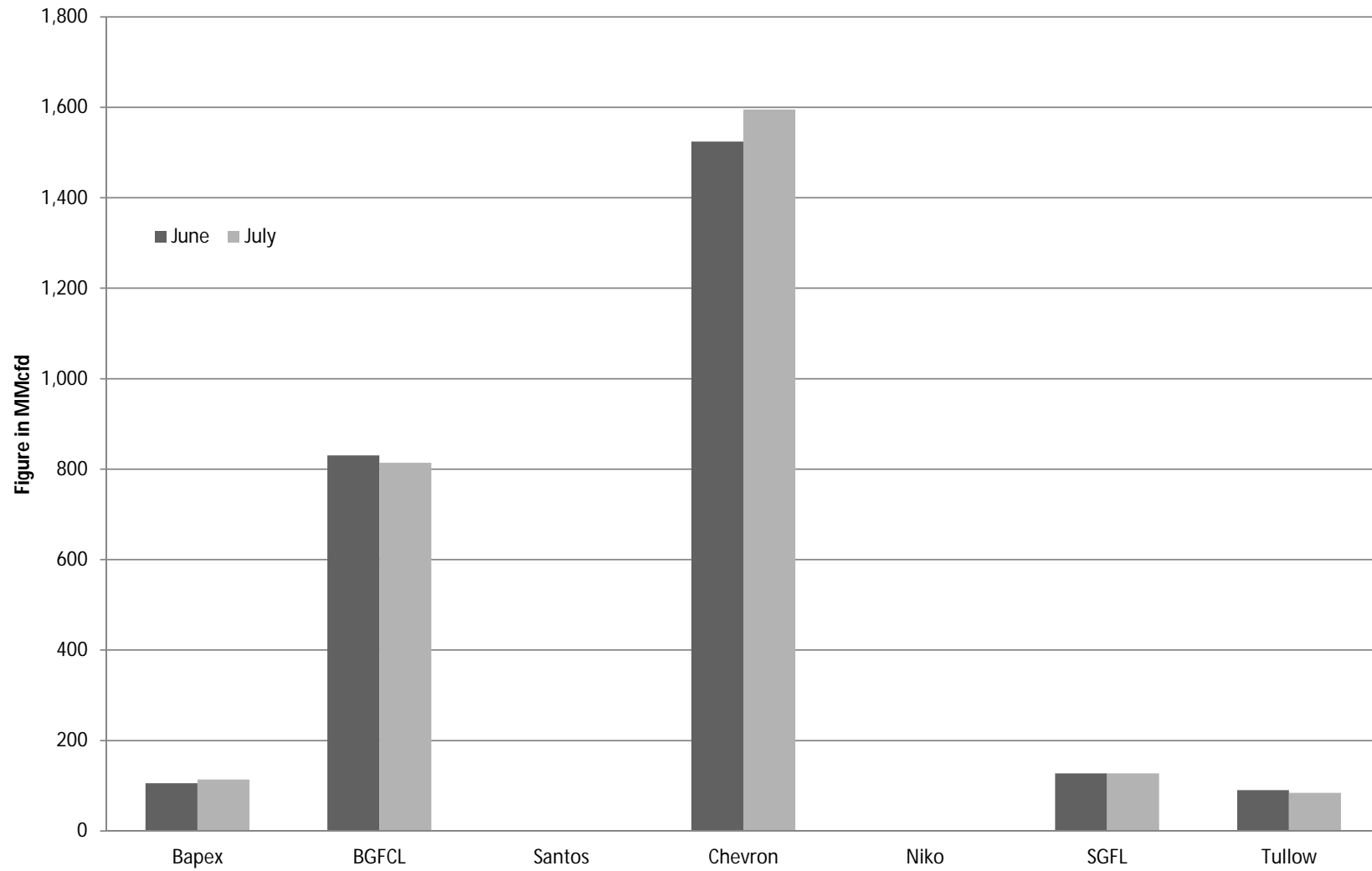
Comparison of fieldwise daily avg. Gas production between June 2018 & July 2018



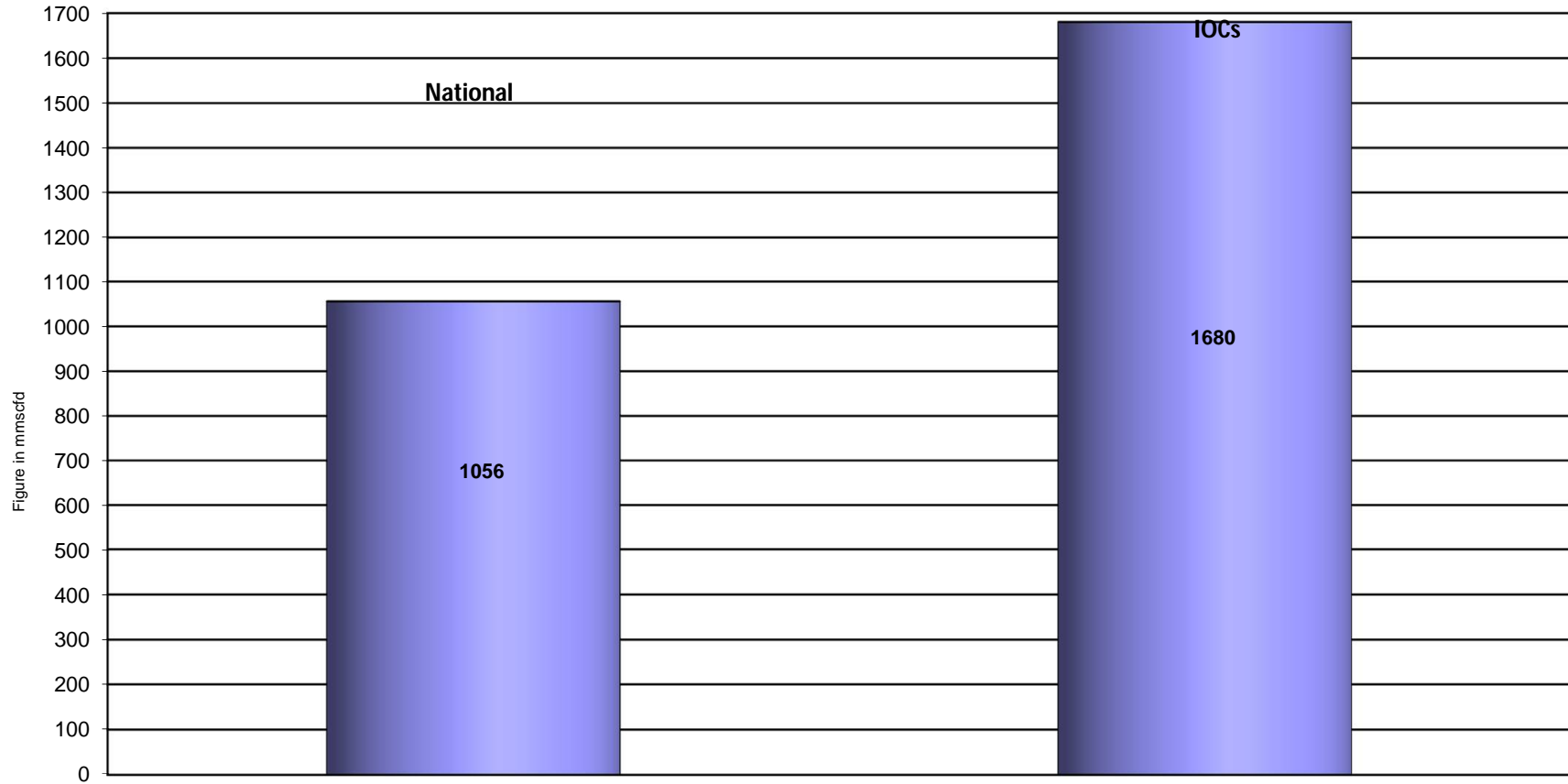
Daily Avg. Production by Operators July 2018



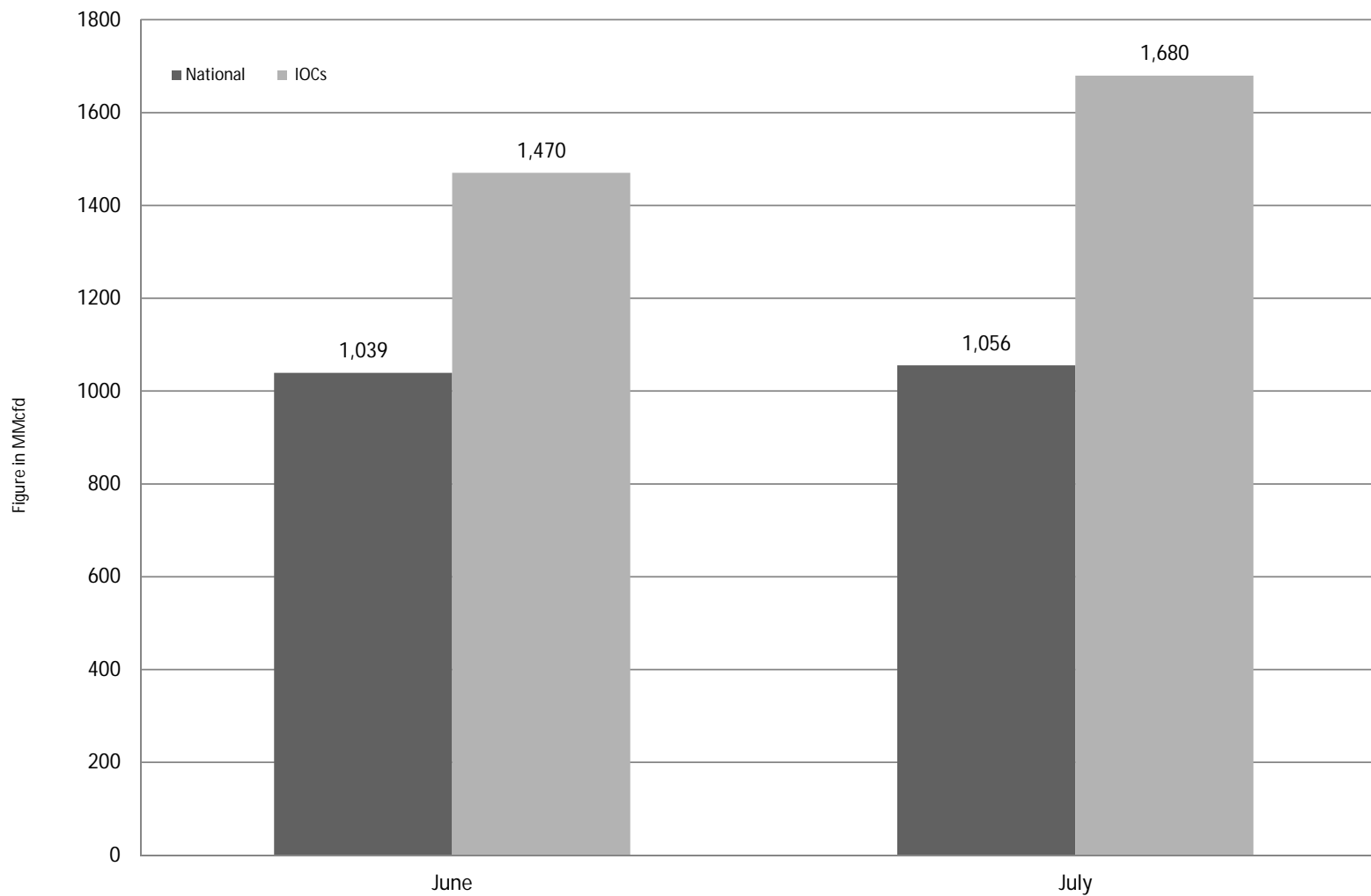
Comparison of operatorwise daily avg. Gas production between June 2018 & July 2018



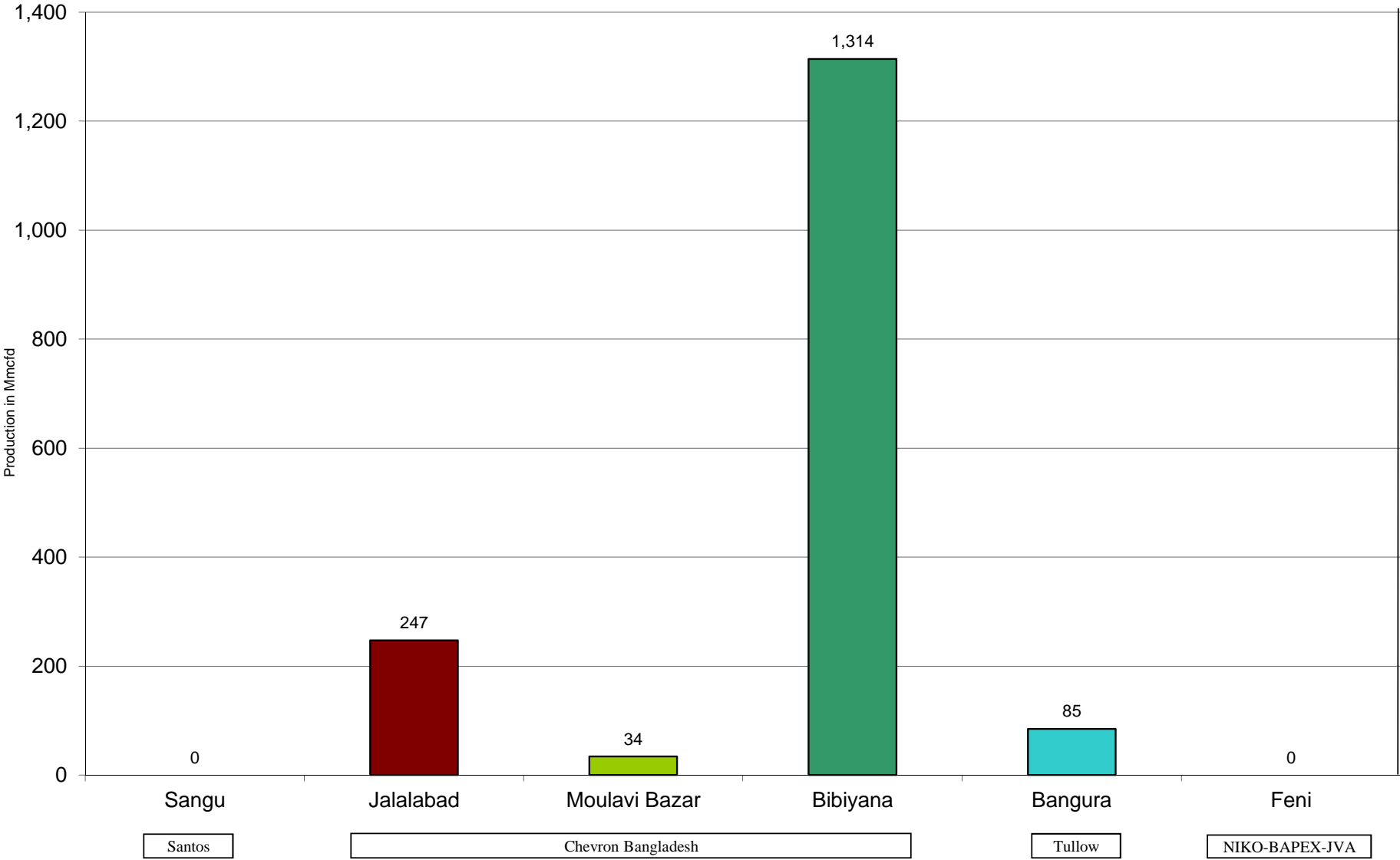
Daily Avg. Production - National Vs. IOCs July 2018



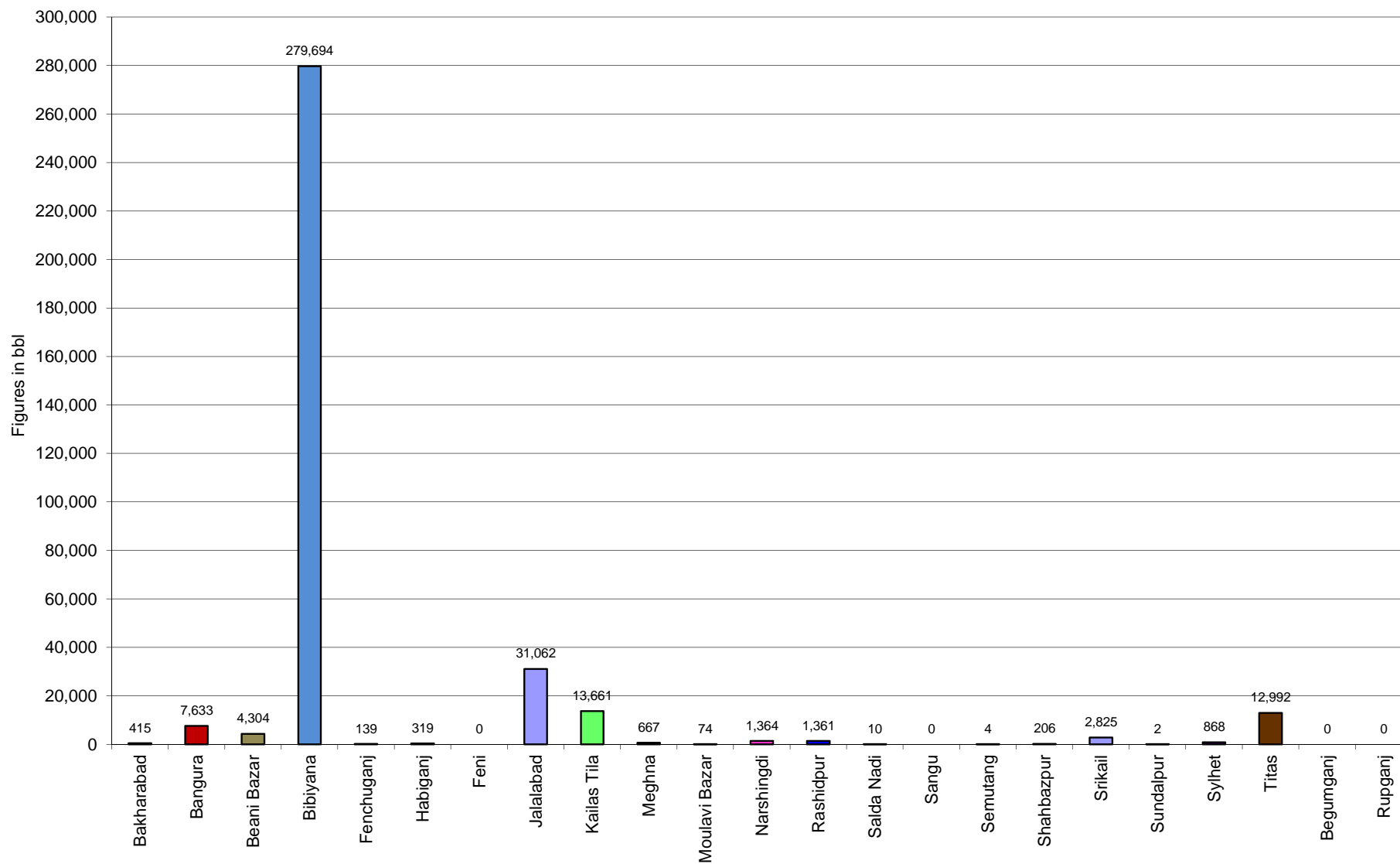
Comparison of daily avg. Gas production - National vs IOC's between June 2018 & July 2018



Daily Avg. Production - IOC and JVA July 2018



Monthly Condensate Production July 2018



Field wise Coal Reserve in Bangladesh

SI No.	Coal Basins	Proved (Mt)	Indicated (Mt)	Inferred (Mt)	Total (Mt)
1	Barapukuria	114.32	211.33	21.06+(43-64)*	346.71+(43-64)*
2	Phulbari	288	226	58	572
3	Khalashpir	-	297.57	225.92	523.49
4	Jamalganj	-	-	1053.9	1053.9
5	Dighipara	-	105	495	600
	Total	402.32	839.9	1896.88-1917.88	3139.10-3160.10

**Resources of VI Seam in second syncline are towards SW of main basin, after Wardell Armstrong*

NOTE: Reserve Figure based on Coal Sector Development Strategy (Final), HCU, PwC

Summary of Reserve and Production of Barapukuria Coal Mine As of 31 July 2018

Coal Initially Place (Proven + Probable)	346.71 Mt	0.347 Bt
Total Reserve of Seam VI	285.41 Mt	0.285 Bt
Recoverable from Seam VI Central part(Proven + Probable)	16.54 Mt*	0.017 Bt
Coal Production in July 2018	0.00 Mt	0.000 Bt
Cumulative Production as of July 2018	10.23 Mt	0.010 Bt
Remaining Reserve	6.31 Mt	0.006 Bt

NOTE: Reserve figure based on Mines and Minerals Development Report ,HCU PwC

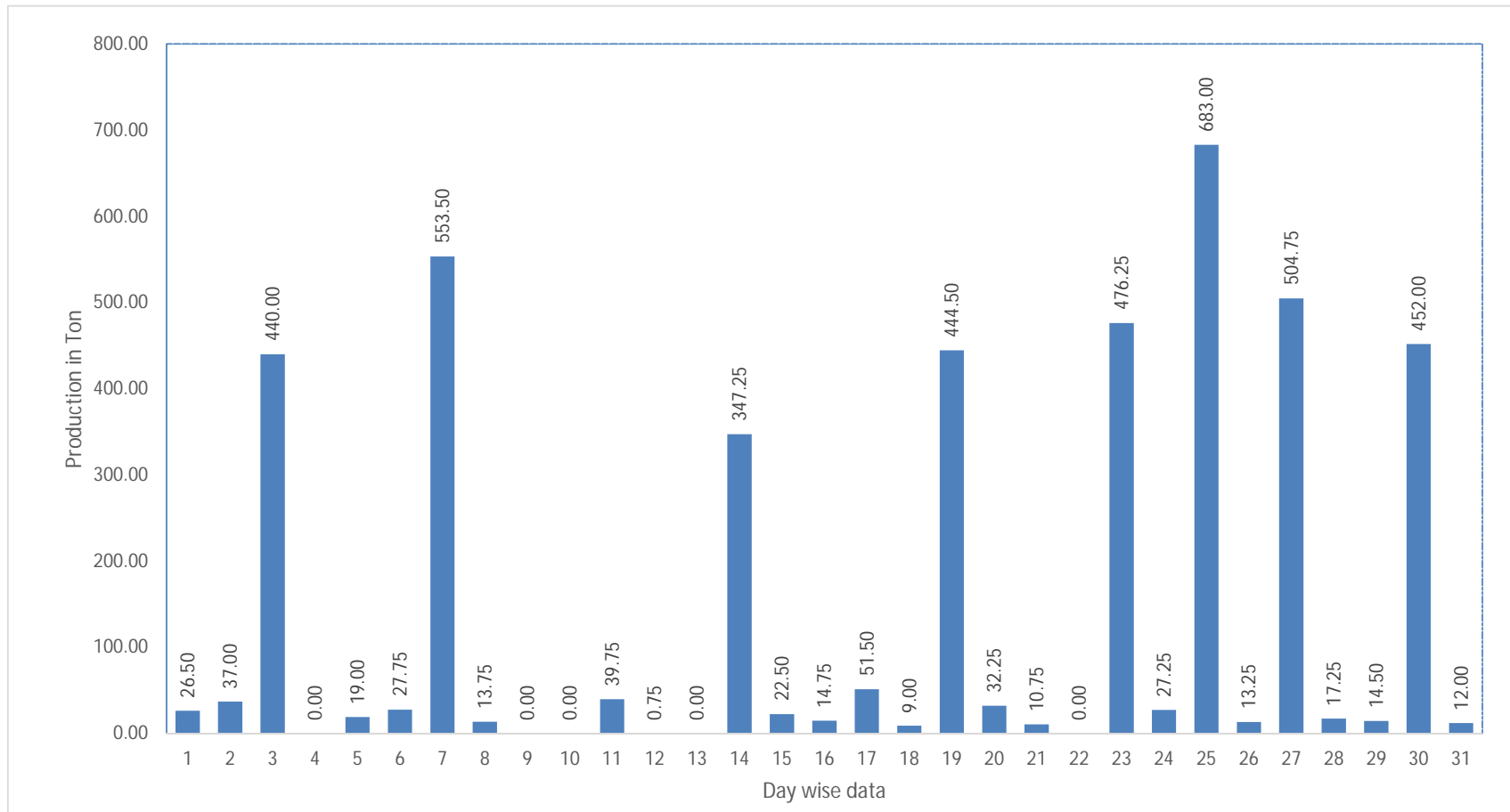
*Figure from BCMCL, M/S Wardell Armstrong. According to Mines and Minerals Development Report ,HCU, PwC this figure is 64.8 Mt

Barapukuria Coal Mine-MPM and P Contract (BCMCL)
Measurement Record: Surface Belt Weigher
Measurement Period: July 2018

Day wise data	Consortium Daily Output (ton)	Consortium Cumulative Total	BCMCL Daily Output	BCMCL Cumulative Total	Remarks
1-Jul-2018	26.50	26.50	26.50	26.50	
2-Jul-2018	37.00	63.50	37.00	63.50	
3-Jul-2018	440.00	503.50	440.00	503.50	
4-Jul-2018	0.00	503.50	0.00	503.50	
5-Jul-2018	19.00	522.50	19.00	522.50	
6-Jul-2018	27.75	550.25	27.75	550.25	
7-Jul-2018	553.50	1,103.75	553.50	1,103.75	
8-Jul-2018	13.75	1,117.50	13.75	1,117.50	
9-Jul-2018	0.00	1,117.50	0.00	1,117.50	
10-Jul-2018	0.00	1,117.50	0.00	1,117.50	
11-Jul-2018	39.75	1,157.25	39.75	1,157.25	
12-Jul-2018	0.75	1,158.00	0.75	1,158.00	
13-Jul-2018	0.00	1,158.00	0.00	1,158.00	
14-Jul-2018	347.25	1,505.25	347.25	1,505.25	
15-Jul-2018	22.50	1,527.75	22.50	1,527.75	
16-Jul-2018	14.75	1,542.50	14.75	1,542.50	
17-Jul-2018	51.50	1,594.00	51.50	1,594.00	
18-Jul-2018	9.00	1,603.00	9.00	1,603.00	
19-Jul-2018	444.50	2,047.50	444.50	2,047.50	
20-Jul-2018	32.25	2,079.75	32.25	2,079.75	
21-Jul-2018	10.75	2,090.50	10.75	2,090.50	
22-Jul-2018	0.00	2,090.50	0.00	2,090.50	
23-Jul-2018	476.25	2,566.75	476.25	2,566.75	
24-Jul-2018	27.25	2,594.00	27.25	2,594.00	
25-Jul-2018	683.00	3,277.00	683.00	3,277.00	
26-Jul-2018	13.25	3,290.25	13.25	3,290.25	
27-Jul-2018	504.75	3,795.00	504.75	3,795.00	
28-Jul-2018	17.25	3,812.25	17.25	3,812.25	
29-Jul-2018	14.50	3,826.75	14.50	3,826.75	
30-Jul-2018	452.00	4,278.75	452.00	4,278.75	
31-Jul-2018	12.00	4,290.75	12.00	4,290.75	

less Difference in Water Content:	210.25
Less Out of Seam dilution:	0
Output (tons) measured by Belt	4,080.50
Tonnes mined in DARR	0
Net Output after removing DARR tonnes:	4,080.50

Barapukuria Coal Mine Daywise Data Graph for July 2018



আসুন, যানবাহনসমূহকে অটোগ্যাসে রূপান্তর করি...

জাতীয় সম্পদ প্রাকৃতিক গ্যাস সাশ্রয় করি...

facebook

"Energy misused, cannot be excused"

আমাদের ঘরে যদি এখনো কয়েল স্টার্টার যুক্ত টিউবলাইট থেকে থাকে, আসুন আজই LED টিউবলাইট দ্বারা প্রতিস্থাপন করি।

HYDROCARBON UNIT ON FACEBOOK

“আসুন আমাদের জাতীয় সম্পদ প্রাকৃতিক গ্যাস সাশ্রয় করি”

১। **LPG** ব্যবহার করুন..

অবৈধ গ্যাস সংযোগ থেকে বিরত থাকুন

২। **CNG** নয়, অকটেন দিয়ে গাড়ি চালান...

গাড়ির ইঞ্জিনের আয়ুষ্কাল বাড়ান

চলুন আজই যানবাহনসমূহ AUTO GAS (LPG) এ রূপান্তর করি...

- * CNG এর তুলনায় LPG কনভারশনে ৫০% কম খরচ হয়
- * ৩-৫ মিনিটে ট্যাংকে ফুয়েল ভর্তি হয়, লম্বা লাইনে দাঁড়িয়ে অপেক্ষা করার প্রয়োজন পরে না
- * CNG এর তুলনায় সিলিন্ডারে জায়গা, ওজন ও প্রেশার কম দরকার
- * রক্ষণাবেক্ষণের খরচ কম
- * পেট্রলের তুলনায় AUTO GAS -এ খরচ প্রায় ৫০% কম
- * গ্যাসোলিন ও ডিজেলের তুলনায় নিঃসরণ কম

Hydrocarbon Unit

Energy & Mineral Resources Division
Ministry of Power, Energy & Mineral Resources
153, Pioneer Road
Segunbagicha, Dhaka-1000
www.hcuro.gov.bd